



Solid Hitch

[WWW.SOLIDHITCH.COM](http://WWW.SOLIDHITCH.COM)

## TOOLS FOR MACHINE WEIGHT 0,8-2 TON

Symmetrical hydraulic quick couplers for excavators ensure high safety and efficiency when replacing work equipment on construction machines thanks to the process of opening and closing the coupler by the excavator's hydraulics. The body is made of high-strength and wear-resistant steel and equipped with hardened and chrome-plated pins to increase wear resistance and safety at work.

Model
QC-S30/180
QC-L-HS01
QC-L-HS03
QC-E-HS02

\* Total weight of the quick coupler depends on machine model

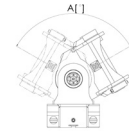
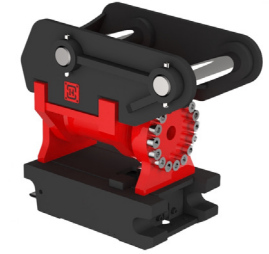
## HYDRAULIC QUICK COUPLERS FOR EXCAVATOR WEIGHT 0,8-2 T



The hydraulic quick coupler with a tilting head is a tool for the most difficult tasks, allowing the excavator's working equipment to be tilted to the right or left by an angle of 90 degrees for excavators weighing up to 13 tons and 70 degrees for excavators weighing up to 38 tons. The pivoting quick coupler allows you to significantly speed up work and reduce fuel consumption and machine wear by reducing the necessary number of movements and adjustments of the excavator. The hydraulic quick coupler is equipped with a reliable and high-quality rotor from the renowned German company HKS with 45 years of experience in the hydraulic industry + Helac.

Model/HKS motor	HKS motor tilt A [°]	Model/Helac motor	Helac motor tilt A [°]
SU85_S30/180	2x90°	SUH4.5_S30/180	2x90°
SU85_L-HS01	2x90°	SUH4.5_L-HS01	2x90°
SU85_E-HS02	2x90°	SUPT4.5_E-HS02	2x90°
SU100_S30/180	2x90°	SUH30_S30/180	2x90°
SU100_L-HS01	2x90°	SUH30_L-HS01	2x90°
SU100_L-HS03	2x90°	SUH30_L-HS03	2x90°
SU100_E-HS02	2x90°	SUH30_E-HS02	2x90°

## TILT HYDRAULIC QUICK COUPLERS FOR EXCAVATOR WEIGHT 0,8-2 T



\* Total weight of the quick coupler depends on machine model

Digging buckets for excavators are standardly equipped with welded or bolted teeth of the CAT J system. The buckets are manufactured with pins for direct mounting on the arm of excavator or with an adapter for a quick coupler. The buckets are made entirely of HARDOX 500 TUF which makes them lighter than competitive buckets, while significantly increasing wear resistance and durability.

## DIGGING BUCKET (DB) FOR EXCAVATOR WEIGHT 0,8-2 T



Model	Capacity SAE [l]	Cutting edge width [mm]	Weight [kg] *	Teeth system	Quantity of teeth
DB01-250	30	250	12		
DB01T-250	30	250	15	CAT 138-6410	2
DB01-300	36	300	15		
DB01T-300	36	300	20	CAT 138-6410	3
DB01-400	42	400	22		
DB01T-400	42	400	32	CATJ200	3
DB02-400	57	400	26		
DB02T-400	57	400	35	CATJ200	4
DB01-500	50	500	25		
DB01T-500	50	500	35	CATJ200	4
DB02-500	65	500	28		
DB02T-500	65	500	38	CATJ200	4
DB02-600	90	600	38		
DB02T-600	90	600	48	CATJ200	4

\* Weight of the bucket excluding adapter



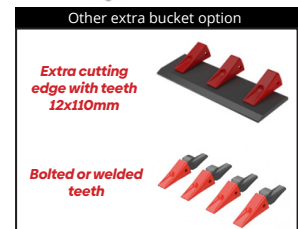
The cable buckets (CB) are manufactured with pins for direct mounting on the arm of excavator or with an adapter for a quick coupler. The buckets are made entirely of HARDOX 500 TUF steel which makes them lighter than competitive buckets, while significantly increasing wear resistance and durability. The buckets can be additionally equipped with bolted or welded teeth.

## CABLE BUCKET (CB) FOR EXCAVATOR WEIGHT 0,8-2 T



Model	Capacity SAE [l]	Cutting edge width [mm]	Weight [kg]*	Teeth system	Quantity of teeth
CB01-250	30	250	13		
CB01T-250	30	250	16	CAT 138-6410	2
CB02-250	42	250	20		
CB02T-250	42	250	23	CAT 138-6410	2
CB01-300	36	300	17		
CB01T-300	36	300	25	CAT J200	3
CB02-300	44	300	22		
CB02T-300	44	300	30	CAT J200	3

\* Weight of the bucket excluding adapter



### GRADING BUCKET SCANDINAVIAN TYPE (GB) FOR EXCAVATOR WEIGHT 0,8-2 T

Scandinavian-type grading buckets (GB) are manufactured with pins for direct mounting on the arm of excavator or with an adapter for a quick coupler. The special design of the bucket with bent sides makes it easier to maneuver, fill and empty the excavated material. The buckets are made entirely of HARDOX 500 TUF steel, which makes them lighter than competitive buckets, while significantly increasing wear resistance and durability.



Model	Capacity SAE [l]	Cutting edge width [mm]	Weight [kg]*
GB01-800	75	800	35
GB02-900	90	900	42
GB02-1000	100	1000	47



\* Weight of the bucket excluding adapter

### DITCH CLEANING BUCKET (DCB) FOR EXCAVATOR WEIGHT 0,8-2 T

The rigid ditch cleaning buckets (DCB) are manufactured with pins for direct mounting on the arm of excavator or with an adapter for a quick coupler. The buckets are made entirely of HARDOX 500 TUF steel which makes them lighter than competitive buckets, while significantly increasing wear resistance and durability.



Model	Capacity SAE [l]	Cutting edge width [mm]	Weight [kg]*
DCB01-600	40	600	23
DCB01-700	50	700	28
DCB01-800	60	800	33
DCB02-900	70	900	38
DCB02-1000	80	1000	41
DCB02-1100	90	1100	48
DCB02-1200	100	1200	57



\* Weight of the bucket excluding adapter

### TILT CLEANING BUCKET (TCB) FOR EXCAVATOR WEIGHT 0,8-2 T

Tilting ditch cleaning buckets (TCB) are manufactured with pins for direct mounting on the arm of excavator or with an adapter for a quick coupler. The buckets are made entirely of HARDOX 500 TUF steel which makes them lighter than competitive buckets, while significantly increasing wear resistance and durability.



Model	Capacity SAE [l]	Cutting edge width [mm]	Quantity of cylinders [Qty]	Weight [kg]*	Wychył/ Tilt [°]
TCB01-800	60	800	1	63	2x45°
TCB02-900	70	900	1	68	2x45°
TCB02-1000	80	1000	1	71	2x45°
TCB02-1100	90	1100	1	78	2x45°
TCB02-1200	100	1200	1	82	2x45°



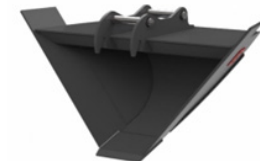
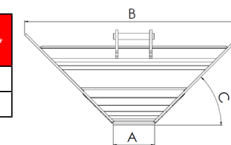
\* Weight of the bucket excluding adapter

### TRAPEZOIDAL BUCKET (VB) FOR EXCAVATOR WEIGHT 0,8-2 T

The trapezoidal bucket (VB) are manufactured with pins for direct mounting on the arm of excavator or with an adapter for a quick coupler. The buckets are made entirely of HARDOX 500 TUF steel which makes them lighter than competitive buckets, while significantly increasing wear resistance and durability.



Model	Capacity SAE [l]	Cutting edge width A [mm]	Cutting edge width B [mm]	Bucket tilt C [°]	Weight [kg]*
VB1-200/900	60	200	900	45	42
VB2-300/1100	90	300	1100	45	50

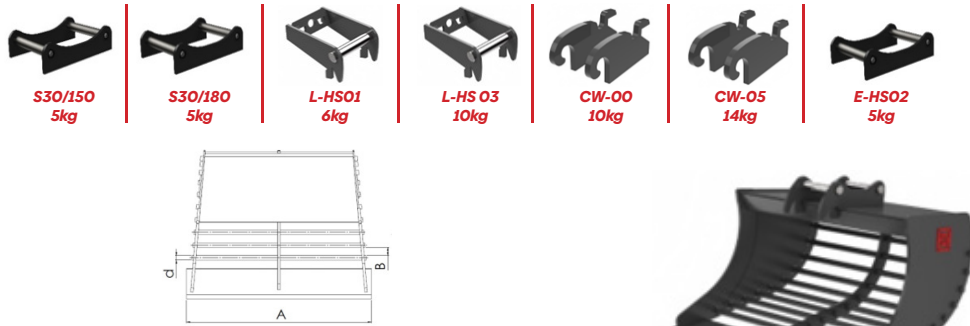


\* Weight of the bucket excluding adapter

## TOOLS FOR MACHINE WEIGHT 0,8-2 TON

The sorting bucket (SB) are manufactured with direct assembly on the excavator arm pins or with an adapter for a quick coupler. The buckets are made entirely of HARDOX 500 TUF steel which makes them lighter than competitive buckets, while significantly increasing wear resistance and durability.

### SORTING BUCKET (SB) FOR EXCAVATOR WEIGHT 0,8-2 T



Model	Capacity SAE [l]	Cutting edge width A [mm]	Bar diameter [mm]	Bar spacing [mm]	Weight [kg]*
SB01-800	65	800	22	30	40
SB02-900	90	900	22	30	65
SB02-1000	100	1000	22	40	80



\* Weight of the bucket excluding adapter

The ripping teeth are manufactured with pins for direct mounting on the arm of excavator or with an adapter for a quick coupler. The ripping teeth are made of S355 steel and HARDOX 500 TUF, which significantly increases wear resistance and durability.

### RIPPER FOR EXCAVATOR WEIGHT 0,8-2 T



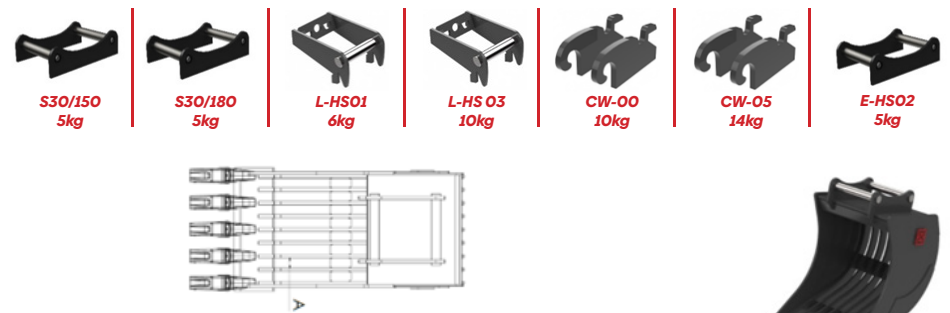
Model	Height H [mm]	Teeth system	Weight [kg]*
R02-500mm	500	CAT J200	35



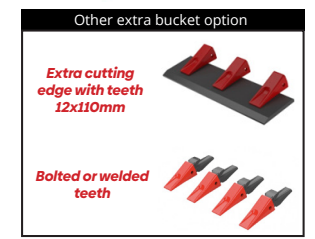
\* Weight of the ripper excluding attachment

Skeleton buckets (SKB) are manufactured with direct assembly on the excavator arm pins or with an adapter for a quick coupler. The buckets are made entirely of HARDOX 500 TUF steel which makes them lighter than competitive buckets, while significantly increasing wear resistance and durability.

### SKELETON BUCKET (SKB) FOR EXCAVATOR WEIGHT 0,8-2 T



Model	Capacity SAE [l]	Cutting edge width [mm]	Distance between ribs A [mm]	Weight [kg]*	Teeth model	Quantity of teeth
SKB01-500	55	500	60	20		
SKB01T-500	55	500	60	28	CATJ200	4
SKB01-600	68	600	50	26		
SKB01T-600	68	600	50	38	CATJ200	4
SKB02-500	60	500	50	29		
SKB02T-500	60	500	50	36	CATJ200	4
SKB02-600	80	600	50	36		
SKB02T-600	80	600	50	45	CATJ200	4



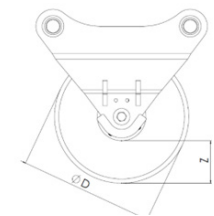
\* Weight of the bucket excluding adapter

The cutters are manufactured with pins for direct mounting on the arm of excavator or with an adapter for a quick connector. The cutters are made of S355 and HARDOX 500 TUF steel, which significantly increases wear resistance and durability.

### ASPHALT CUTTER FOR EXCAVATOR WEIGHT 0,8-2 T



Model	Depth of cut Z [mm]	Cutting disc diameter D [mm]	Weight [kg]*
AC02-370mm	100	370	23



\* Weight of the asphalt cutter excluding adapter

**GRADING BEAM (GRB) FOR EXCAVATOR WEIGHT 0,8-2 T**

**ADAPTERS, TOP BRACKETS FOR EXCAVATOR WEIGHT 0,8-2 T**

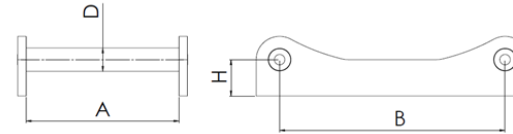
The grading beam (GRB) are manufactured with pins for direct mounting on the arm of excavator or with an adapter for a quick connector. The grading beam are made of S355 and HARDOX 500 TUF steel, which significantly increases wear resistance and durability.



Model	Width W [mm]	Roller diameter D [mm]	Weight [kg]*
GRB02-1000	1000	178	149
GRB02-1250	1250	178	160



\* Weight of the grading beam excluding adapter

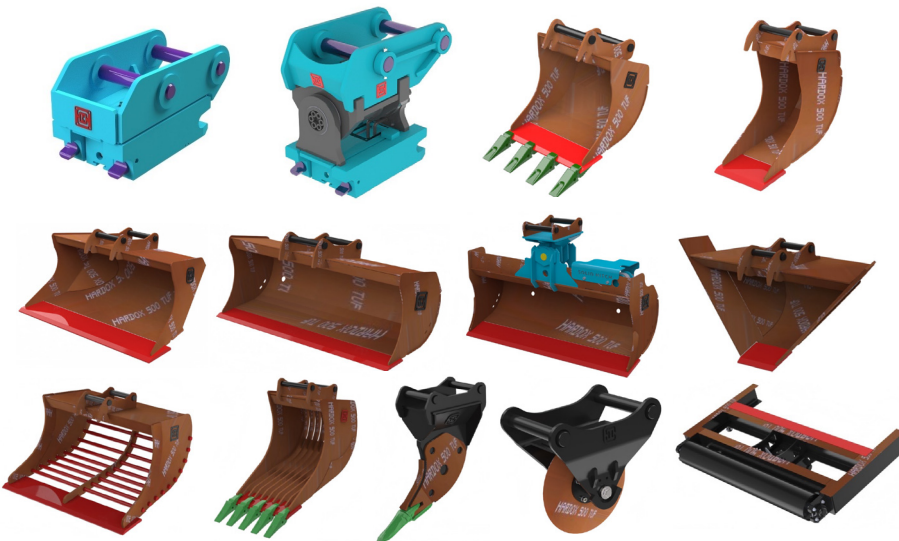


Model	A [mm]	B [mm]	D [mm]	H [mm]
AS30/150	150	200	30	50
AS30/180	180	230	30	50

\* Other adapters in option



**Material specification**



- STEEL HARDOX 500 TUF
- WEAR RESISTANT STEEL HB 500
- ROD CROMAX
- STEEL S690QL
- STEEL S355

Service Life



Grade	Increase in relative service life
Hardox 400 → 500 Tuf	60-70%
Hardox 450 → 500 Tuf	25-30%

Increasing bucket life using Hardox 500 TUF steel. SSAB company data

## TOOLS FOR MACHINE WEIGHT 2-3 T

Symmetrical hydraulic quick couplers for excavators ensure high safety and efficiency when replacing work equipment on construction machines thanks to the process of opening and closing the coupler by the excavator's hydraulics. The body is made of high-strength and wear-resistant steel and equipped with hardened and chrome-plated pins to increase wear resistance and safety at work.

Model
QC-S30/180
QC-S40/200
QC-L-HS03
QC-E-HS02
QC-E-HS03

\* Total weight of the quick coupler depends on machine model

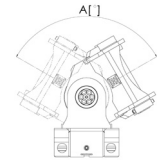


## HYDRAULIC QUICK COUPLERS FOR EXCAVATOR WEIGHT 2-3 T

The hydraulic quick coupler with a tilting head is a tool for the most difficult tasks, allowing the excavator's working equipment to be tilted to the right or left by an angle of 90 degrees for excavators weighing up to 13 tons and 70 degrees for excavators weighing up to 38 tons. The pivoting quick coupler allows you to significantly speed up work and reduce fuel consumption and machine wear by reducing the necessary number of movements and adjustments of the excavator. The hydraulic quick coupler is equipped with a reliable and high-quality rotor from the renowned German company HKS with 45 years of experience in the hydraulic industry + Helac.

Model/HKS motor	HKS motor tilt A [°]	Model/ Helac motor	Helac motor tilt A [°]
SU85_S30/180	2x90°	SUH30_S30/180	2x90°
SU85_E-HS02	2x90°	SUH30_E-HS02	2x90°
SU100_S30/180	2x90°	SUH30_S40/200	2x90°
SU100_S40/200	2x90°	SUH30_L-HS03	2x90°
SU100_L-HS03	2x90°	SUH30_E-HS03	2x90°
SU100_E-HS02	2x90°		
SU100_E-HS03	2x90°		
SU115_S40/200	2x90°		
SU115_L-HS03	2x90°		
SU115_E-HS03	2x90°		

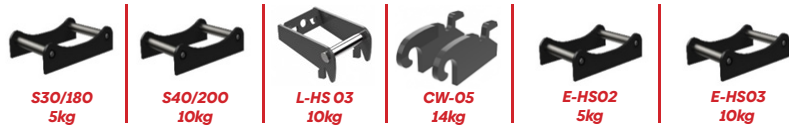
## TILT HYDRAULIC QUICK COUPLERS FOR EXCAVATOR WEIGHT 2-3 T



\* Total weight of the quick coupler depends on machine model

Digging buckets for excavators are standardly equipped with welded or bolted teeth of the CAT J system. The buckets are manufactured with direct assembly on the excavator arm pins or with an adapter for a quick coupler. The buckets are made entirely of HARDOX 500 TUF which makes them lighter than competitive buckets, while significantly increasing wear resistance and durability.

## DIGGING BUCKET (DB) FOR EXCAVATOR WEIGHT 2-3 T



Model	Capacity SAE [l]	Cutting edge width [mm]	Weight [kg]*	Teeth system	Quantity of teeth
DB02-300	50	300	26		
DB02T-300	50	300	33	CATJ200	3
DB02-400	60	400	29		
DB02T-400	60	400	39	CATJ200	4
DB02-500	80	500	36		
DB02T-500	80	500	46	CATJ200	4
DB02-600	100	600	43		
DB02T-600	100	600	53	CATJ200	4
DB03-700	125	700	53		
DB03T-700	125	700	66	CATJ200	5



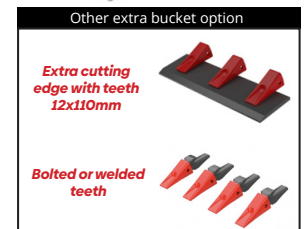
\* Weight of the bucket excluding adapter

The cable buckets (CB) are manufactured with direct assembly on the excavator arm pins or with an adapter for a quick coupler. The buckets are made entirely of HARDOX 500 TUF steel which makes them lighter than competitive buckets, while significantly increasing wear resistance and durability. The buckets can be additionally equipped with bolted or welded teeth.

## CABLE BUCKET (CB) FOR EXCAVATOR WEIGHT 2-3 T



Model	Capacity SAE [l]	Cutting edge width [mm]	Weight [kg]*	Teeth system	Quantity of teeth
CB02-300	55	300	24		
CB02T-300	55	300	29	CAT J200	3
CB03-300	70	300	27		
CB03T-300	70	300	32	CAT J200	3



\* Weight of the bucket excluding adapter

### GRADING BUCKET SCANDINAVIAN TYPE (GB) FOR EXCAVATOR WEIGHT 2-3 T

Scandinavian-type grading buckets (GB) are manufactured with pins for direct mounting on the arm of excavator or with an adapter for a quick coupler. The special design of the bucket with bent sides makes it easier to maneuver, fill and empty the excavated material. The buckets are made entirely of HARDOX 500 TUF steel, which makes them lighter than competitive buckets, while significantly increasing wear resistance and durability.



Model	Capacity SAE [l]	Cutting edge width [mm]	Weight [kg]
GB03-900	100	900	42
GB03-1000	120	1000	47
GB03-1100	145	1100	59



\* Weight of the bucket excluding adapter

### DITCH CLEANING BUCKET (DCB) FOR EXCAVATOR WEIGHT 2-3 T

The rigid ditch cleaning buckets (DCB) are manufactured with direct assembly on the excavator arm pins or with an adapter for a quick coupler. The buckets are made entirely of HARDOX 500 TUF steel which makes them lighter than competitive buckets, while significantly increasing wear resistance and durability.



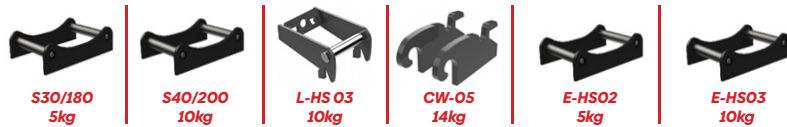
Model	Capacity SAE [l]	Cutting edge width [mm]	Weight [kg]*
DCB02-1000	115	1000	47
DCB02-1100	130	1100	57
DCB03-1200	145	1200	62
DCB03-1400	160	1400	72



\* Weight of the bucket excluding adapter

### TILT CLEANING BUCKET (TCB) FOR EXCAVATOR WEIGHT 2-3 T

Tilting ditch cleaning buckets (TCB) are manufactured with direct assembly on the excavator arm pins or with an adapter for a quick coupler. The buckets are made entirely of HARDOX 500 TUF steel which makes them lighter than competitive buckets, while significantly increasing wear resistance and durability.



Model	Capacity SAE [l]	Cutting edge width [mm]	Quantity of cylinders [Qty]	Weight [kg]*	Tilt (°)
TCB03-1000	115	1000	1	100	2x45°
TCB03-1100	130	1100	1	110	2x45°
TCB03-1200	145	1200	1	115	2x45°
TCB03-1400	160	1400	1	126	2x45°



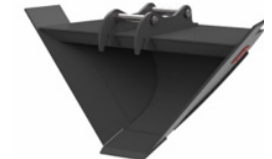
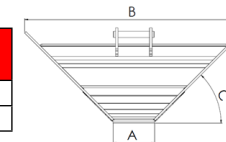
\* Weight of the bucket excluding adapter

### TRAPEZOIDAL BUCKET (VB) FOR EXCAVATOR WEIGHT 2-3 T

The trapezoidal bucket (VB) are manufactured with direct assembly on the excavator arm pins or with an adapter for a quick coupler. The buckets are made entirely of HARDOX 500 TUF steel which makes them lighter than competitive buckets, while significantly increasing wear resistance and durability.



Model	Capacity SAE [l]	Cutting edge width A [mm]	Cutting edge width B [mm]	Bucket tilt angle C [°]	Weight [kg]
VB3-200/1100	100	200	1100	45	55
VB3-200/1200	120	200	1200	45	65

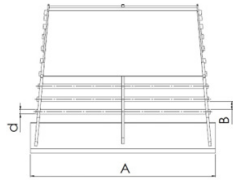


\* Weight of the bucket excluding adapter

## TOOLS FOR MACHINE WEIGHT 2-3 TON

The sorting bucket (SB) are manufactured with direct assembly on the excavator arm pins or with an adapter for a quick coupler. The buckets are made entirely of HARDOX 500 TUF steel which makes them lighter than competitive buckets, while significantly increasing wear resistance and durability.

### SORTING BUCKET (SB) FOR EXCAVATOR WEIGHT 2-3 T



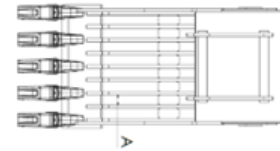
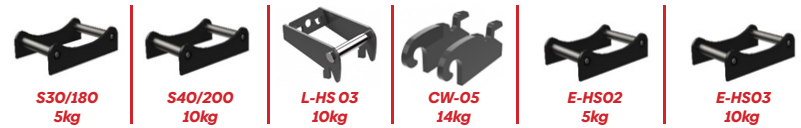
Model	Capacity SAE [l]	Cutting edge width A [mm]	Bar diameter [mm]	Bar spacing [mm]	Weight [kg]
SB03-900	100	900	22	40	70
SB03-1000	120	1000	22	50	80
SB03-1100	145	1100	22	50	95



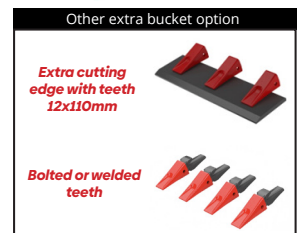
\* Weight of the bucket excluding adapter

Skeleton buckets (SKB) are manufactured with direct assembly on the excavator arm pins or with an adapter for a quick coupler. The buckets are made entirely of HARDOX 500 TUF steel which makes them lighter than competitive buckets, while significantly increasing wear resistance and durability.

### SKELETON BUCKET (SKB) FOR EXCAVATOR WEIGHT 2-3 T



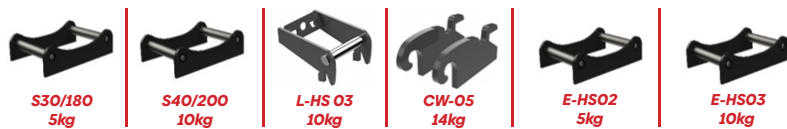
Model	Capacity SAE [l]	Cutting edge width [mm]	Distance between ribs A [mm]	Weight [kg]	Teeth model	Quantity of teeth
SKB03-600	105	600	50	65		
SKB03T-600	105	600	50	75	CATJ200	4
SKB03-800	150	800	52	85		
SKB03T-800	150	800	52	100	CATJ200	5



\* Weight of the bucket excluding adapter

The ripping teeth are manufactured with pins for direct mounting on the arm of excavator or with an adapter for a quick coupler. The ripping teeth are made of S355 steel and HARDOX 500 TUF, which significantly increases wear resistance and durability.

### RIPPER FOR EXCAVATOR WEIGHT 2-3 T



Model	Height H [mm]	Teeth system	Weight [kg]
R05-600	600	CATJ200	50



\* Weight of the ripper excluding attachment

The cutters are manufactured with pins for direct mounting on the arm of excavator or with an adapter for a quick connector. The cutters are made of S355 and HARDOX 500 TUF steel, which significantly increases wear resistance and durability.

### ASPHALT CUTTER FOR EXCAVATOR WEIGHT 2-3 T



Model	Depth of cut Z [mm]	Cutting disc diameter D [mm]	Weight [kg]
AC03-370	100	370	23
AC03-400	115	400	30



\* Weight of the asphalt cutter excluding adapter



### GRADING BEAM (GRB) FOR EXCAVATOR WEIGHT 2-3 T

### ADAPTERS, TOP BRACKETS FOR EXCAVATOR WEIGHT 2-3 T

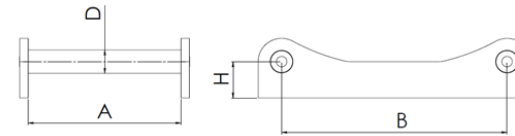
The grading beam (GRB) are manufactured with pins for direct mounting on the arm of excavator or with an adapter for a quick connector. The grading beam are made of S355 and HARDOX 500 TUF steel, which significantly increases wear resistance and durability.



Model	Width W [mm]	Roller diameter D [mm]	Weight (kg)*
GRB1250	1250	178	160
GRB1500	1500	245	318



\* Weight of the grading beam excluding adapter

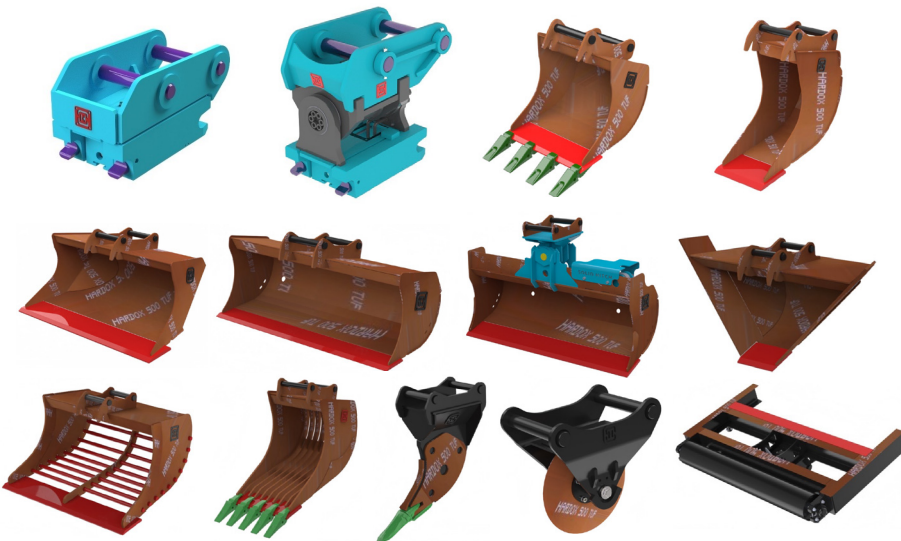


Model	A [mm]	B [mm]	D [mm]	H [mm]
AS30/180	180	230	30	50
AS40	200	300	40	55
AS40-HIGH	200	300	40	150



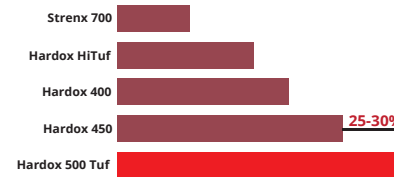
\* Other adapters in option

## Material specification



- STEEL HARDOX 500 TUF
- WEAR RESISTANT STEEL HB 500
- ROD CROMAX
- STEEL S690QL
- STEEL S355

Service Life



Grade	Increase in relative service life
Hardox 400 → 500 Tuf	60-70%
Hardox 450 → 500 Tuf	25-30%

Increasing bucket life using Hardox 500 TUF steel. SSAB company data

## TOOLS FOR MACHINE WEIGHT 3-4 T

Symmetrical hydraulic quick couplers for excavators ensure high safety and efficiency when replacing work equipment on construction machines thanks to the process of opening and closing the coupler by the excavator's hydraulics. The body is made of high-strength and wear-resistant steel and equipped with hardened and chrome-plated pins to increase wear resistance and safety at work.

Model
QC-S40/200
QC-L-HS03
QC-E-HS03

### HYDRAULIC QUICK COUPLERS FOR EXCAVATOR WEIGHT 3-4 T



\* Total weight of the quick coupler depends on machine model

Digging buckets for excavators are standardly equipped with welded or bolted teeth of the CAT J system. The buckets are manufactured with direct assembly on the excavator arm pins or with an adapter for a quick coupler. The buckets are made entirely of HARDOX 500 TUF which makes them lighter than competitive buckets, while significantly increasing wear resistance and durability.

### DIGGING BUCKET (DB) FOR EXCAVATOR WEIGHT 3-4 T



S40/200  
10kg

L-HS 03  
10kg

CW-05  
14kg

E-HS03  
10kg

Model	Capacity SAE [l]	Cutting edge width [mm]	Weight [kg]*	Teeth system	Quantity of teeth
DB03-300	80	300	37		
DB03T-300	80	300	45	CATJ200	3
DB03-400	100	400	45		
DB03T-400	100	400	55	CATJ200	4
DB04-500	125	500	53		
DB04T-500	125	500	63	CATJ200	4
DB04-600	160	600	65		
DB04T-600	160	600	75	CATJ200	4
DB04-700	185	700	73		
DB04T-700	185	700	86	CATJ200	5
DB04-800	210	800	83		
DB04T-800	210	800	96	CATJ200	5

\* Weight of the bucket excluding adapter



Other extra bucket option

Extra cutting edge with teeth  
12x110mm

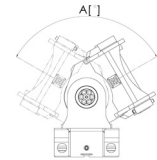


The hydraulic quick coupler with a tilting head is a tool for the most difficult tasks, allowing the excavator's working equipment to be tilted to the right or left by an angle of 90 degrees for excavators weighing up to 13 tons and 70 degrees for excavators weighing up to 38 tons. The pivoting quick coupler allows you to significantly speed up work and reduce fuel consumption and machine wear by reducing the necessary number of movements and adjustments of the excavator. The hydraulic quick coupler is equipped with a reliable and high-quality rotor from the renowned German company HKS with 45 years of experience in the hydraulic industry + Helac.

### TILT HYDRAULIC QUICK COUPLERS FOR EXCAVATOR WEIGHT 3-4 T

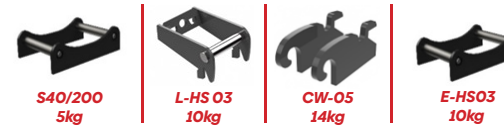
Model / HKS motor	HKS motor tilt A [°]	Model/Helac motor	Helac motor tilt A [°]
SU115_S40/200	2x90°	SUH50_S40/200	2x90°
SU115_L-HS03	2x90°	SUH50_L-HS03	2x90°
SU115_E-HS03	2x90°	SUH50_E-HS03	2x90°

\* Total weight of the quick coupler depends on machine model



The cable buckets (CB) are manufactured with direct assembly on the excavator arm pins or with an adapter for a quick coupler. The buckets are made entirely of HARDOX 500 TUF steel which makes them lighter than competitive buckets, while significantly increasing wear resistance and durability. The buckets can be additionally equipped with bolted or welded teeth.

### CABLE BUCKET (CB) FOR EXCAVATOR WEIGHT 3-4 T



S40/200  
5kg

L-HS 03  
10kg

CW-05  
14kg

E-HS03  
10kg

Model	Capacity SAE [l]	Cutting edge width [mm]	Weight [kg]*	Teeth system	Quantity of teeth
CB02-300	65	300	36		
CB02T-300	65	300	44	CAT J200	3
CB03-400	80	400	42		
CB03T-400	80	400	50	CAT J200	3

\* Weight of the bucket excluding adapter



Other extra bucket option

Extra cutting edge with teeth  
12x110mm



Bolted or welded teeth



### GRADING BUCKET SCANDINAVIAN TYPE (GB) FOR EXCAVATOR WEIGHT 3-4 T

Scandinavian-type grading buckets (GB) are manufactured with pins for direct mounting on the arm of excavator or with an adapter for a quick coupler. The special design of the bucket with bent sides makes it easier to maneuver, fill and empty the excavated material. The buckets are made entirely of HARDOX 500 TUF steel, which makes them lighter than competitive buckets, while significantly increasing wear resistance and durability.



Model	Capacity SAE [l]	Cutting edge width [mm]	Weight [kg]
GB03-1000	150	1000	61
GB03-1100	180	1100	71
GB04-1200	200	1200	81



\* Weight of the bucket excluding adapter

The rigid ditch cleaning buckets (DCB) are manufactured with direct assembly on the excavator arm pins or with an adapter for a quick coupler. The buckets are made entirely of HARDOX 500 TUF steel which makes them lighter than competitive buckets, while significantly increasing wear resistance and durability.

### DITCH CLEANING BUCKET (DCB) FOR EXCAVATOR WEIGHT 3-4 T



Model	Capacity SAE [l]	Cutting edge width [mm]	Weight [kg]*
DCB03-1000	140	1000	60
DCB03-1100	160	1100	65
DCB03-1200	180	1200	70
DCB03-1400	200	1400	80
DCB03-1500	220	1500	90



\* Weight of the bucket excluding adapter

Tilting ditch cleaning buckets (TCB) are manufactured with direct assembly on the excavator arm pins or with an adapter for a quick coupler. The buckets are made entirely of HARDOX 500 TUF steel which makes them lighter than competitive buckets, while significantly increasing wear resistance and durability.

### TILT CLEANING BUCKET (TCB) FOR EXCAVATOR WEIGHT 3-4 T



Model	Capacity SAE [l]	Cutting edge width [mm]	Quantity of cylinders [Qty]	Weight [kg]*	Wychyl/Tilt [°]
TCB03-1000	140	1000	1	115	2x45°
TCB03-1100	160	1100	1	120	2x45°
TCB03-1200	180	1200	1	126	2x45°
TCB04-1400	200	1400	1	136	2x45°
TCB04-1500	220	1500	1	146	2x45°



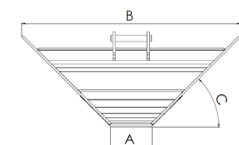
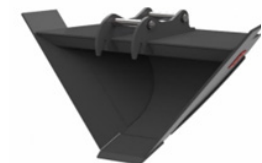
\* Weight of the bucket excluding adapter

The trapezoidal bucket (VB) are manufactured with direct assembly on the excavator arm pins or with an adapter for a quick coupler. The buckets are made entirely of HARDOX 500 TUF steel which makes them lighter than competitive buckets, while significantly increasing wear resistance and durability.

### TRAPEZOIDAL BUCKET (VB) FOR EXCAVATOR WEIGHT 3-4 T



Model	Capacity SAE [l]	Cutting edge width A [mm]	Cutting edge width B [mm]	Bucket tilt angle C [°]	Weight [kg]
VB3-200/1100	140	200	1100	45	80
VB4-200/1200	200	200	1200	45	115

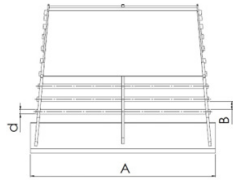


\* Weight of the bucket excluding adapter

## TOOLS FOR MACHINE WEIGHT 3-4 T

The sorting bucket (SB) are manufactured with direct assembly on the excavator arm pins or with an adapter for a quick coupler. The buckets are made entirely of HARDOX 500 TUF steel which makes them lighter than competitive buckets, while significantly increasing wear resistance and durability.

### SORTING BUCKET (SB) FOR EXCAVATOR WEIGHT 3-4 T

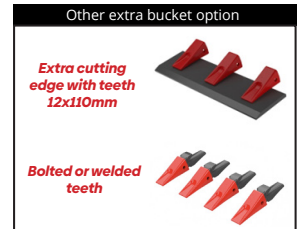
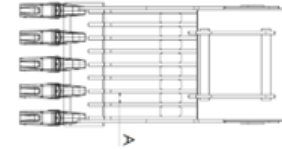
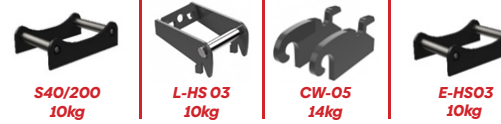


Model	Capacity SAE [l]	Cutting edge width A (mm)	Bar diameter (mm)	Bar spacing (mm)	Weight [kg]
SB03-1000	150	1000	22	40	85
SB03-1100	180	1100	22	50	95
SB03-1200	200	1200	22	50	105

\* Weight of the bucket excluding adapter

Skeleton buckets (SKB) are manufactured with direct assembly on the excavator arm pins or with an adapter for a quick coupler. The buckets are made entirely of HARDOX 500 TUF steel which makes them lighter than competitive buckets, while significantly increasing wear resistance and durability.

### SKELETON BUCKET (SKB) FOR EXCAVATOR WEIGHT 3-4 T



Model	Capacity SAE [l]	Cutting edge width (mm)	Distance between ribs A (mm)	Weight [kg]	Teeth model	Quantity of teeth
SKB03-600	150	600	50	88		
SKB03T-600	150	600	50	98	CATJ200	4
SKB03-700	185	700	55	100		
SKB03T-700	185	700	55	113	CATJ200	5
SKB04-800	210	800	50	112		
SKB04T-800	210	800	50	125	CATJ200	5

\* Weight of the bucket excluding adapter

The ripping teeth are manufactured with pins for direct mounting on the arm of excavator or with an adapter for a quick coupler. The ripping teeth are made of S355 steel and HARDOX 500 TUF, which significantly increases wear resistance and durability.

### RIPPER FOR EXCAVATOR WEIGHT 3-4 T



Model	Height H (mm)	Teeth system	Weight [kg]
R05-620	620	CATJ250	55



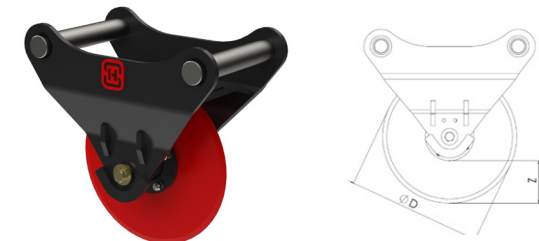
\* Weight of the ripper excluding attachment

The cutters are manufactured with pins for direct mounting on the arm of excavator or with an adapter for a quick connector. The cutters are made of S355 and HARDOX 500 TUF steel, which significantly increases wear resistance and durability.

### ASPHALT CUTTER FOR EXCAVATOR WEIGHT 3-4 T



Model	Depth of cut Z (mm)	Cutting disc diameter D (mm)	Weight [kg]
AC03-400	115	400	30



\* Weight of the asphalt cutter excluding adapter

**GRADING BEAM (GRB) FOR EXCAVATOR WEIGHT 3-4 T**

**ADAPTERS, TOP BRACKETS FOR EXCAVATOR WEIGHT 3-4 T**

The grading beam (GRB) are manufactured with pins for direct mounting on the arm of excavator or with an adapter for a quick connector. The grading beam are made of S355 and HARDOX 500 TUF steel, which significantly increases wear resistance and durability.



S40/200  
10kg

L-HS 03  
10kg

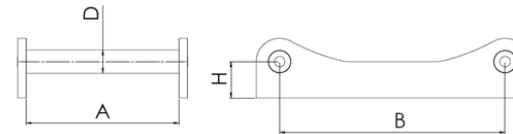
CW-05  
14kg

E-HS03  
10kg

Model	Width W [mm]	Roller diameter D [mm]	Weight [kg]*
GRB03-1250	1250	178	160
GRB03-1500	1500	245	318



\* Weight of the grading beam excluding adapter

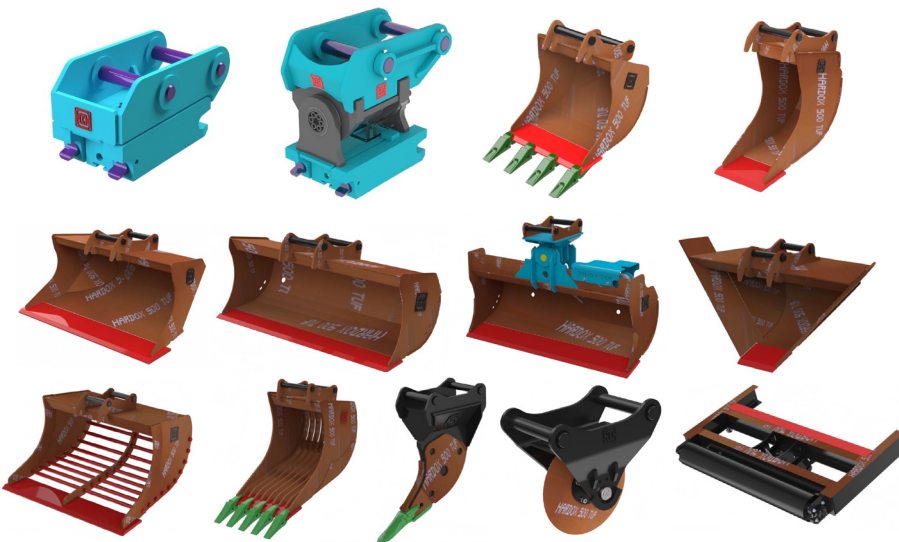


Model	A [mm]	B [mm]	D [mm]	H [mm]
AS40	200	300	40	55
AS40-HIGH	200	300	40	150

\* Other adapters in option

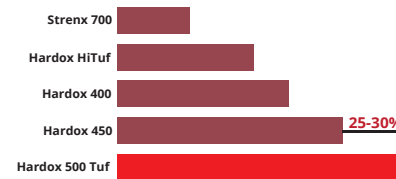


**Material specification**



- STEEL HARDOX 500 TUF
- WEAR RESISTANT STEEL HB 500
- ROD CROMAX
- STEEL S690QL
- STEEL S355

Service Life



Grade	Increase in relative service life
Hardox 400 → 500 Tuf	60-70%
Hardox 450 → 500 Tuf	25-30%

Increasing bucket life using Hardox 500 TUF steel. SSAB company data

## TOOLS FOR MACHINE WEIGHT 4-6 T

Symmetrical hydraulic quick couplers for excavators ensure high safety and efficiency when replacing work equipment on construction machines thanks to the process of opening and closing the coupler by the excavator's hydraulics. The body is made of high-strength and wear-resistant steel and equipped with hardened and chrome-plated pins to increase wear resistance and safety at work.

Model
QC-S40/200
QC-L-HS03
QC-E-HS03

\* Total weight of the quick coupler depends on machine model

## HYDRAULIC QUICK COUPLERS FOR EXCAVATOR WEIGHT 4-6 T

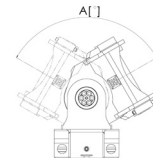


The hydraulic quick coupler with a tilting head is a tool for the most difficult tasks, allowing the excavator's working equipment to be tilted to the right or left by an angle of 90 degrees for excavators weighing up to 13 tons and 70 degrees for excavators weighing up to 38 tons. The pivoting quick coupler allows you to significantly speed up work and reduce fuel consumption and machine wear by reducing the necessary number of movements and adjustments of the excavator. The hydraulic quick coupler is equipped with a reliable and high-quality rotor from the renowned German company HKS with 45 years of experience in the hydraulic industry + Helac.

Model/HKS motor	HKS motor tilt A [°]	Model/Helac motor	Helac motor tilt A [°]
SU115_S40/200	2x90°	SUH50_S40/200	2x90°
SU115_L-HS03	2x90°	SUH50_L-HS03	2x90°
SU115_E-HS03	2x90°	SUH50_E-HS03	2x90°
SU125_S40/200	2x90°		
SU125_L-HS03	2x90°		
SU125_E-HS03	2x90°		

\* Total weight of the quick coupler depends on machine model

## TILT HYDRAULIC QUICK COUPLERS FOR EXCAVATOR WEIGHT 4-6 T



Digging buckets for excavators are standardly equipped with welded or bolted teeth of the CAT J system. The buckets are manufactured with direct assembly on the excavator arm pins or with an adapter for a quick coupler. The buckets are made entirely of HARDOX 500 TUF which makes them lighter than competitive buckets, while significantly increasing wear resistance and durability.

## DIGGING BUCKET (DB) FOR EXCAVATOR WEIGHT 4-6 T



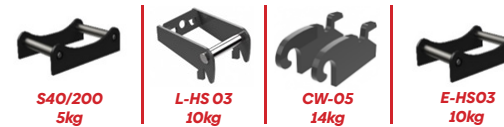
Model	Capacity SAE [l]	Cutting edge width a [mm]	Weight [kg]*	Teeth system	Quantity of teeth
DB04-300	90	300	40		
DB04T-300	90	300	48	CATJ200	3
DB04-400	130	400	53		
DB04T-400	130	400	63	CATJ200	4
DB04-500	170	500	63		
DB04T-500	170	500	73	CATJ200	4
DB04-600	200	600	73		
DB04T-600	200	600	83	CATJ200	4
DB06-700	240	700	83		
DB06T-700	240	700	96	CATJ200	5
DB06-800	280	800	93		
DB06T-800	280	800	106	CATJ200	5

\* Weight of the bucket excluding adapter



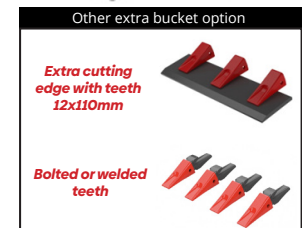
The cable buckets (CB) are manufactured with direct assembly on the excavator arm pins or with an adapter for a quick coupler. The buckets are made entirely of HARDOX 500 TUF steel which makes them lighter than competitive buckets, while significantly increasing wear resistance and durability. The buckets can be additionally equipped with bolted or welded teeth.

## CABLE BUCKET (CB) FOR EXCAVATOR WEIGHT 4-6 T



Model	Capacity SAE [l]	Cutting edge width [mm]	Weight [kg]*	Teeth system	Quantity of teeth
CB04-300	90	300	42		
CB04T-300	90	300	50	CAT J200	3
CB06-400	130	400	50		
CB06T-400	130	400	58	CAT J200	3

\* Weight of the bucket excluding adapter



### GRADING BUCKET SCANDINAVIAN TYPE (GB) FOR EXCAVATOR WEIGHT 4-6 T

Scandinavian-type grading buckets (GB) are manufactured with pins for direct mounting on the arm of excavator or with an adapter for a quick coupler. The special design of the bucket with bent sides makes it easier to maneuver, fill and empty the excavated material. The buckets are made entirely of HARDOX 500 TUF steel, which makes them lighter than competitive buckets, while significantly increasing wear resistance and durability.



Model	Capacity SAE [l]	Cutting edge width [mm]	Weight [kg]
GB04-1200	200	1200	81
GB03-1200	250	1200	91
GB04-1300	300	1300	101



\* Weight of the bucket excluding adapter

The rigid ditch cleaning buckets (DCB) are manufactured with direct assembly on the excavator arm pins or with an adapter for a quick coupler. The buckets are made entirely of HARDOX 500 TUF steel which makes them lighter than competitive buckets, while significantly increasing wear resistance and durability.



Model	Capacity SAE [l]	Cutting edge width [mm]	Weight [kg]*
DCB04-1200	200	1200	80
DCB04-1300	220	1300	90
DCB04-1400	240	1400	100
DCB06-1500	260	1500	110
DCB06-1600	280	1600	120



\* Weight of the bucket excluding adapter

### TILT CLEANING BUCKET (TCB) FOR EXCAVATOR WEIGHT 4-6 T

Tilting ditch cleaning buckets (TCB) are manufactured with direct assembly on the excavator arm pins or with an adapter for a quick coupler. The buckets are made entirely of HARDOX 500 TUF steel which makes them lighter than competitive buckets, while significantly increasing wear resistance and durability.



Model	Capacity SAE [l]	Cutting edge width [mm]	Quantity of cylinders [Qty]	Weight [kg]*	Tilt [°]
TCB04-1200	200	1200	1	135	2x45°
TCB04-1300	220	1300	1	145	2x45°
TCB04-1400	240	1400	1	155	2x45°
TCB06-1500	260	1500	1	165	2x45°
TCB06-1600	280	1600	1	175	2x45°



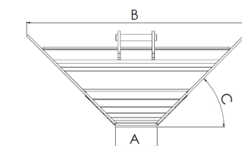
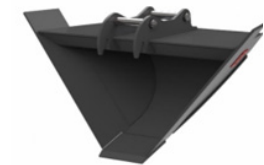
\* Weight of the bucket excluding adapter

The trapezoidal bucket (VB) are manufactured with direct assembly on the excavator arm pins or with an adapter for a quick coupler. The buckets are made entirely of HARDOX 500 TUF steel which makes them lighter than competitive buckets, while significantly increasing wear resistance and durability.



Model	Capacity SAE [l]	Cutting edge width A [mm]	Cutting edge width B [mm]	Bucket tilt angle c [°]	Weight [kg]
VB4-200/1400	200	200	1400	45	115
VB6-300/1500	250	300	1500	45	140

### TRAPEZOIDAL BUCKET (VB) FOR EXCAVATOR WEIGHT 4-6 T

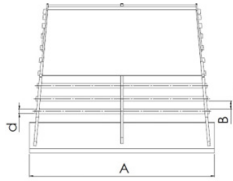


\* Weight of the bucket excluding adapter

## TOOLS FOR MACHINE WEIGHT 4-6 T

The sorting bucket (SB) are manufactured with direct assembly on the excavator arm pins or with an adapter for a quick coupler. The buckets are made entirely of HARDOX 500 TUF steel which makes them lighter than competitive buckets, while significantly increasing wear resistance and durability.

### SORTING BUCKET (SB) FOR EXCAVATOR WEIGHT 4-6 T



Model	Capacity SAE [l]	Cutting edge width A [mm]	Bar diameter [mm]	Bar spacing [mm]	Weight [kg]
SB04-1200	200	1200	30	50	105
SB04-1200	250	1200	30	50	125
SB06-1300	300	1300	30	50	145

\* Weight of the bucket excluding adapter

The ripping teeth are manufactured with pins for direct mounting on the arm of excavator or with an adapter for a quick coupler. The ripping teeth are made of S355 steel and HARDOX 500 TUF, which significantly increases wear resistance and durability.

### RIPPER FOR EXCAVATOR WEIGHT 4-6 T



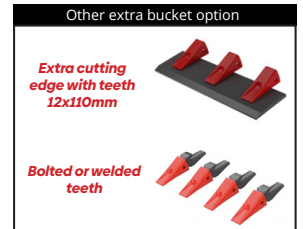
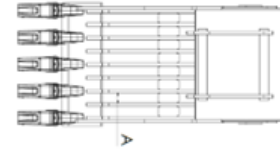
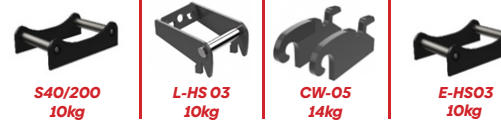
Model	Height H [mm]	Teeth system	Weight [kg]
R05-620	620	CATJ250	55

\* Weight of the ripper excluding attachment



Skeleton buckets (SKB) are manufactured with direct assembly on the excavator arm pins or with an adapter for a quick coupler. The buckets are made entirely of HARDOX 500 TUF steel which makes them lighter than competitive buckets, while significantly increasing wear resistance and durability.

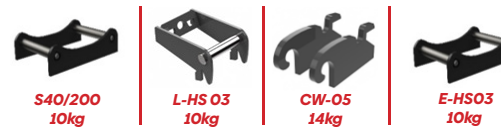
### SKELETON BUCKET (SKB) FOR EXCAVATOR WEIGHT 4-6 T



\* Weight of the bucket excluding adapter

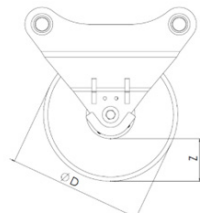
The cutters are manufactured with pins for direct mounting on the arm of excavator or with an adapter for a quick connector. The cutters are made of S355 and HARDOX 500 TUF steel, which significantly increases wear resistance and durability.

### ASPHALT CUTTER FOR EXCAVATOR WEIGHT 4-6 T



Model	Depth of cut Z [mm]	Cutting disc diameter D [mm]	Weight [kg]
AC03-400	115	400	30

\* Weight of the asphalt cutter excluding adapter





**GRADING BEAM (GRB) FOR EXCAVATOR WEIGHT 4-6 T**

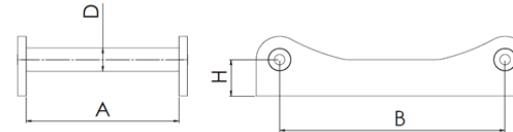
**ADAPTERS, TOP BRACKETS FOR EXCAVATOR WEIGHT 4-6 T**

The grading beam (GRB) are manufactured with pins for direct mounting on the arm of excavator or with an adapter for a quick connector. The grading beam are made of S355 and HARDOX 500 TUF steel, which significantly increases wear resistance and durability.



Model	Width W [mm]	Roller diameter D [mm]	Weight [kg]*
GRB03-1250	1250	178	160
GRB03-1500	1500	245	318

\* Weight of the grading beam excluding adapter

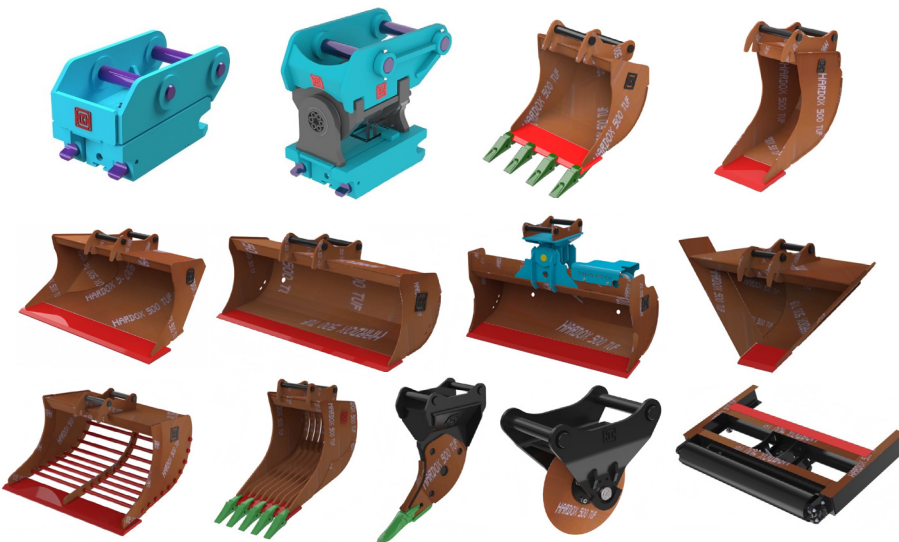


Model	A [mm]	B [mm]	D [mm]	H [mm]
AS40	200	300	40	55
AS40-HIGH	200	300	40	150

\* Other adapters in option

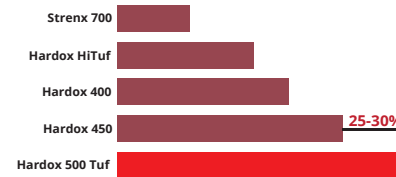


**Material specification**



- STEEL HARDOX 500 TUF
- WEAR RESISTANT STEEL HB 500
- ROD CROMAX
- STEEL S690QL
- STEEL S355

Service Life



Grade	Increase in relative service life
Hardox 400 → 500 Tuf	60-70%
Hardox 450 → 500 Tuf	25-30%

Increasing bucket life using Hardox 500 TUF steel. SSAB company data

## TOOLS FOR MACHINE WEIGHT 6-8 T

Symmetrical hydraulic quick couplers for excavators ensure high safety and efficiency when replacing work equipment on construction machines thanks to the process of opening and closing the coupler by the excavator's hydraulics. The body is made of high-strength and wear-resistant steel and equipped with hardened and chrome-plated pins to increase wear resistance and safety at work.

Model
QC-S40/200
QC-S45
QC-S50
QC-L-HS03
QC-L-HS08
QC-E-HS03
QC-E-HS06
QC-E-HS08

\* Total weight of the quick coupler depends on machine model



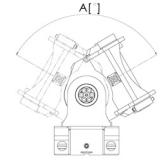
## HYDRAULIC QUICK COUPLERS FOR EXCAVATOR WEIGHT 6-8 T

The hydraulic quick coupler with a tilting head is a tool for the most difficult tasks, allowing the excavator's working equipment to be tilted to the right or left by an angle of 90 degrees for excavators weighing up to 13 tons and 70 degrees for excavators weighing up to 38 tons. The pivoting quick coupler allows you to significantly speed up work and reduce fuel consumption and machine wear by reducing the necessary number of movements and adjustments of the excavator. The hydraulic quick coupler is equipped with a reliable and high-quality rotor from the renowned German company HKS with 45 years of experience in the hydraulic industry + Helac.

Model/HKS motor	HKS motor tilt A [°]	Model/ Helac motor	Helac motor tilt A [°]
SU125_S40/200	2x90°	SUH70_S40/200	2x90°
SU125_L-HS03	2x90°	SUH70_L-HS03	2x90°
SU125_E-HS03	2x90°	SUH70_E-HS03	2x90°
SU130_S45	2x90°	SUH100_S40/200	2x90°
SU130_S50	2x90°	SUH100_L-HS03	2x90°
SU130_L-HS08	2x90°	SUH100_E-HS03	2x90°
SU130_E-HS06	2x90°		
SU130_E-HS08	2x90°		

\* Total weight of the quick coupler depends on machine model

## TILT HYDRAULIC QUICK COUPLERS FOR EXCAVATOR WEIGHT 6-8 T



Digging buckets for excavators are standardly equipped with welded or bolted teeth of the CAT J system. The buckets are manufactured with direct assembly on the excavator arm pins or with an adapter for a quick coupler. The buckets are made entirely of HARDOX 500 TUF which makes them lighter than competitive buckets, while significantly increasing wear resistance and durability.

## DIGGING BUCKET (DB) FOR EXCAVATOR WEIGHT 6-8 T



Model	Capacity SAE [t]	Cutting edge width [mm]	Weight [kg]*	Teeth system	Quantity of teeth
DB06-400	150	400	74		
DB06T-400	150	400	83	CATJ200	3
DB06-500	190	500	86		
DB06T-500	190	500	97	CATJ200	4
DB06-600	250	600	98		
DB06T-600	250	600	109	CATJ200	4
DB08-700	280	700	110		
DB08T-700	280	700	121	CATJ200	4
DB08-800	310	800	122		
DB08T-800	310	800	136	CATJ200	5
DB08-900	350	900	134		
DB08T-900	350	900	148	CATJ200	5

\* Weight of the bucket excluding adapter



Extra cutting edge with teeth 12x110mm

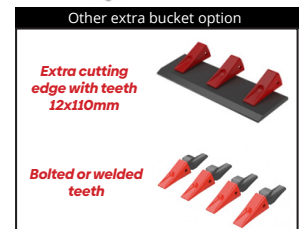
The cable buckets (CB) are manufactured with direct assembly on the excavator arm pins or with an adapter for a quick coupler. The buckets are made entirely of HARDOX 500 TUF steel which makes them lighter than competitive buckets, while significantly increasing wear resistance and durability. The buckets can be additionally equipped with bolted or welded teeth.

## CABLE BUCKET (CB) FOR EXCAVATOR WEIGHT 6-8 T



Model	Capacity SAE [t]	Cutting edge width [mm]	Weight [kg]*	Teeth system	Quantity of teeth
CB06-300	130	300	66		
CB06T-300	130	300	75	CAT J200	3
CB08-400	160	400	74		
CB08T-400	160	400	83	CAT J200	3

\* Weight of the bucket excluding adapter



Extra cutting edge with teeth 12x110mm

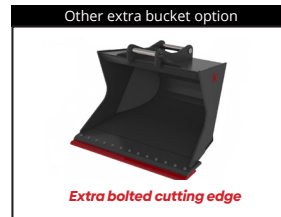
Bolted or welded teeth

### GRADING BUCKET SCANDINAVIAN TYPE (GB) FOR EXCAVATOR WEIGHT 6-8 T

Scandinavian-type grading buckets (GB) are manufactured with pins for direct mounting on the arm of excavator or with an adapter for a quick coupler. The special design of the bucket with bent sides makes it easier to maneuver, fill and empty the excavated material. The buckets are made entirely of HARDOX 500 TUF steel, which makes them lighter than competitive buckets, while significantly increasing wear resistance and durability.



Model	Capacity SAE [l]	Cutting edge width [mm]	Weight [kg]
GB06-1200	300	1200	100
GB06-1300	350	1300	125
GB08-1400	400	1400	140



\* Weight of the bucket excluding adapter

The rigid ditch cleaning buckets (DCB) are manufactured with direct assembly on the excavator arm pins or with an adapter for a quick coupler. The buckets are made entirely of HARDOX 500 TUF steel which makes them lighter than competitive buckets, while significantly increasing wear resistance and durability.

### DITCH CLEANING BUCKET (DCB) FOR EXCAVATOR WEIGHT 6-8 T



Model	Capacity SAE [l]	Cutting edge width [mm]	Weight [kg]*
DCB06-1200	275	1200	120
DCB06-1300	300	1300	130
DCB06-1400	325	1400	140
DCB08-1500	350	1500	150
DCB08-1600	375	1600	160
DCB08-1800	400	1800	170



\* Weight of the bucket excluding adapter



Tilting ditch cleaning buckets (TCB) are manufactured with direct assembly on the excavator arm pins or with an adapter for a quick coupler. The buckets are made entirely of HARDOX 500 TUF steel which makes them lighter than competitive buckets, while significantly increasing wear resistance and durability.

### TILT CLEANING BUCKET (TCB) FOR EXCAVATOR WEIGHT 6-8 T



Model	Capacity SAE [l]	Cutting edge width [mm]	Quantity of cylinders [Qty]	Weight [kg]*	Wychył/ Tilt [°]
TCB06-1200	275	1200	1	195	2x45°
TCB04-1300	300	1300	1	215	2x45°
TCB06-1400	325	1400	1	225	2x45°
TCB08-1500	350	1500	1	235	2x45°
TCB08-1600	375	1600	1	245	2x45°
TCB08-1800	400	1800	1	255	2x45°



\* Weight of the bucket excluding adapter

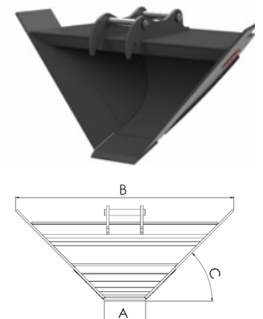


The trapezoidal bucket (VB) are manufactured with direct assembly on the excavator arm pins or with an adapter for a quick coupler. The buckets are made entirely of HARDOX 500 TUF steel which makes them lighter than competitive buckets, while significantly increasing wear resistance and durability.

### TRAPEZOIDAL BUCKET (VB) FOR EXCAVATOR WEIGHT 6-8 T



Model	Capacity SAE [l]	Cutting edge width A [mm]	Cutting edge width B [mm]	Bucket tilt angle C [°]	Weight [kg]
VB6-300/1600	300	300	1600	45	170
VB8-400/1700	400	400	1700	45	210

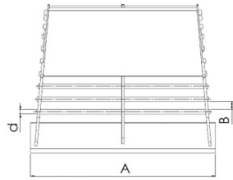


\* Weight of the bucket excluding adapter

## TOOLS FOR MACHINE WEIGHT 6-8 T

The sorting bucket (SB) are manufactured with direct assembly on the excavator arm pins or with an adapter for a quick coupler. The buckets are made entirely of HARDOX 500 TUF steel which makes them lighter than competitive buckets, while significantly increasing wear resistance and durability.

### SORTING BUCKET (SB) FOR EXCAVATOR WEIGHT 6-8 T



Model	Capacity SAE [l]	Cutting edge width A [mm]	Bar diameter [mm]	Bar spacing [mm]	Weight [kg]
SB06-1200	300	1200	30	50	165
SB06-1300	350	1300	30	50	175
SB08-1400	400	1400	30	50	185

\* Weight of the bucket excluding adapter

The ripping teeth are manufactured with pins for direct mounting on the arm of excavator or with an adapter for a quick coupler. The ripping teeth are made of S355 steel and HARDOX 500 TUF, which significantly increases wear resistance and durability.

### RIPPER FOR EXCAVATOR WEIGHT 6-8 T



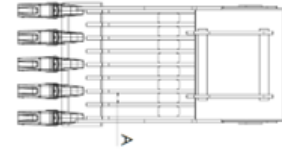
Model	Height H [mm]	Teeth system	Weight [kg]
R10-700	700	CATJ300	120



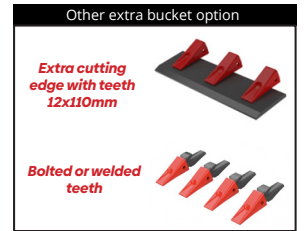
\* Weight of the ripper excluding attachment

Skeleton buckets (SKB) are manufactured with direct assembly on the excavator arm pins or with an adapter for a quick coupler. The buckets are made entirely of HARDOX 500 TUF steel which makes them lighter than competitive buckets, while significantly increasing wear resistance and durability.

### SKELETON BUCKET (SKB) FOR EXCAVATOR WEIGHT 6-8 T



Model	Capacity SAE [l]	Cutting edge width [mm]	Distance between ribs A [mm]	Weight [kg]	Teeth model	Quantity of teeth
SKB06-800	300	800	61	175		
SKB06T-800	300	800	61	190	CATJ200	5
SKB08-900	350	900	57	190		
SKB08T-900	350	900	57	205	CATJ200	5
SKB08-1000	400	1000	60	205		
SKB08T-1000	400	1000	60	220	CATJ200	5



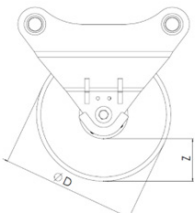
\* Weight of the bucket excluding adapter

The cutters are manufactured with pins for direct mounting on the arm of excavator or with an adapter for a quick coupler. The cutters are made of S355 and HARDOX 500 TUF steel, which significantly increases wear resistance and durability.

### ASPHALT CUTTER FOR EXCAVATOR WEIGHT 6-8 T



Model	Depth of cut Z [mm]	Cutting disc diameter D [mm]	Weight [kg]
AC10-470	150	470	55



\* Weight of the asphalt cutter excluding adapter

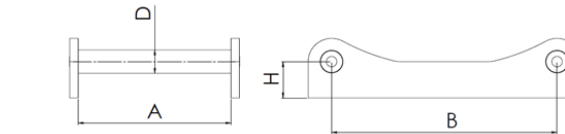
### GRADING BEAM (GRB) FOR EXCAVATOR WEIGHT 6-8 T

### ADAPTERS, TOP BRACKETS FOR EXCAVATOR WEIGHT 6-8 T

The grading beam (GRB) are manufactured with pins for direct mounting on the arm of excavator or with an adapter for a quick connector. The grading beam are made of S355 and HARDOX 500 TUF steel, which significantly increases wear resistance and durability.



Model	Width W [mm]	Roller diameter D [mm]	Weight [kg]*
GRB08-1500	1500	245	318
GRB08-2000	2000	245	415



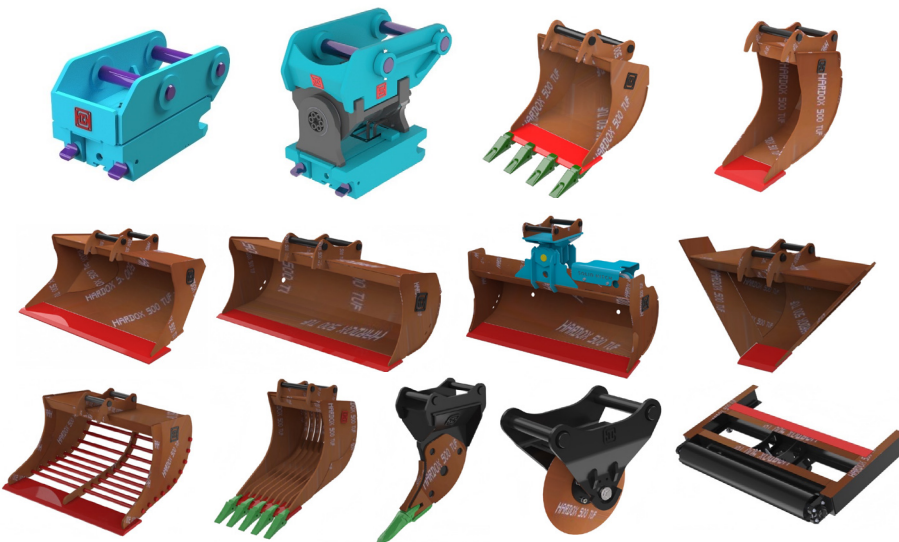
Model	A [mm]	B [mm]	D [mm]	H [mm]
AS40	200	300	40	55
AS40-HIGH	200	300	40	150



\* Weight of the grading beam excluding adapter

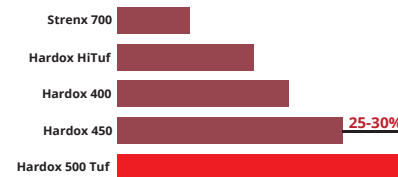
\* Other adapters in option

## Material specification



- STEEL HARDOX 500 TUF
- WEAR RESISTANT STEEL HB 500
- ROD CROMAX
- STEEL S355
- STEEL S690QL

Service Life



Grade	Increase in relative service life
Hardox 400 → 500 Tuf	60-70%
Hardox 450 → 500 Tuf	25-30%

Increasing bucket life using Hardox 500 TUF steel. SSAB company data

## TOOLS FOR MACHINE WEIGHT 8-12 T

Symmetrical hydraulic quick couplers for excavators ensure high safety and efficiency when replacing work equipment on construction machines thanks to the process of opening and closing the coupler by the excavator's hydraulics. The body is made of high-strength and wear-resistant steel and equipped with hardened and chrome-plated pins to increase wear resistance and safety at work.

Model
QC-S45
QC-S50
QC-L-HS08
QC-E-HS06
QC-E-HS08
QC-CW20S
QC-CW20

\* Total weight of the quick coupler depends on machine model



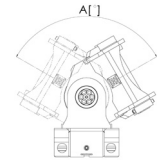
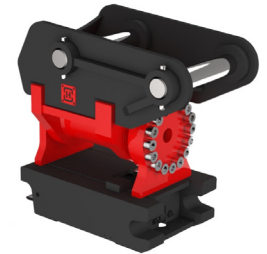
## HYDRAULIC QUICK COUPLERS FOR EXCAVATOR WEIGHT 8-12 T

The hydraulic quick coupler with a tilting head is a tool for the most difficult tasks, allowing the excavator's working equipment to be tilted to the right or left by an angle of 90 degrees for excavators weighing up to 13 tons and 70 degrees for excavators weighing up to 38 tons. The pivoting quick coupler allows you to significantly speed up work and reduce fuel consumption and machine wear by reducing the necessary number of movements and adjustments of the excavator. The hydraulic quick coupler is equipped with a reliable and high-quality rotor from the renowned German company HKS with 45 years of experience in the hydraulic industry + Helac.

Model/ HKS motor	HKS motor tilt A [°]	Model/ Silnik He-lac/Helac motor	Model/Helac motor
SU160_S45	2x90°	SUH100_S45	2x90°
SU160_S50	2x90°	SUH100_S50	2x90°
SU160_L-HS08	2x90°	SUH100_L-HS08	2x90°
SU160_E-HS06	2x90°	SUH100_E-HS06	2x90°
SU160_E-HS08	2x90°	SUH100_E-HS08	2x90°
SU160_CW20S	2x90°	SUH100_CW20S	2x90°
SU160_CW20	2x90°	SUH100_CW20	2x90°
SU200_S45	2x90°	SUH180_S50	2x60°
SU200_S50	2x90°	SUH180_L-HS08	2x60°
SU200_L-HS08	2x90°	SUH180_CW20S	2x60°
SU200_E-HS06	2x90°	SUH180_CW20	2x60°
SU200_E-HS08	2x90°		
SU200_CW20S	2x90°		
SU200_CW20	2x90°		

\* Total weight of the quick coupler depends on machine model

## TILT HYDRAULIC QUICK COUPLERS FOR EXCAVATOR WEIGHT 8-12 T



Digging buckets for excavators are standardly equipped with welded or bolted teeth of the CAT J system. The buckets are manufactured with direct assembly on the excavator arm pins or with an adapter for a quick coupler. The buckets are made entirely of HARDOX 500 TUF which makes them lighter than competitive buckets, while significantly increasing wear resistance and durability.

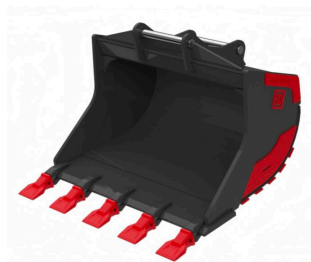
## DIGGING BUCKET (DB) FOR EXCAVATOR WEIGHT 8-12 T

The cable buckets (CB) are manufactured with direct assembly on the excavator arm pins or with an adapter for a quick coupler. The buckets are made entirely of HARDOX 500 TUF steel which makes them lighter than competitive buckets, while significantly increasing wear resistance and durability. The buckets can be additionally equipped with bolted or welded teeth.

## CABLE BUCKET (CB) FOR EXCAVATOR WEIGHT 8-12 T

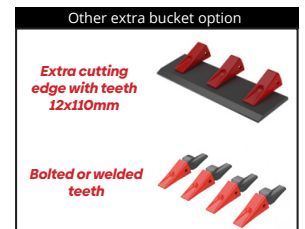


Model	Capacity SAE [l]	Cutting edge width [mm]	Weight [kg]*	Teeth system	Quantity of teeth
DB08-400	190	400	120		
DB08T-400	190	400	142	CATJ250	3
DB08-500	250	500	148		
DB08T-500	250	500	177	CATJ250	4
DB08-600	300	600	176		
DB08T-600	300	600	205	CATJ250	4
DB09-700	350	700	204		
DB09T-700	350	700	232	CATJ250	4
DB09-800	400	800	231		
DB09T-800	400	800	260	CATJ250	4
DB12-900	450	900	259		
DB12T-900	450	900	288	CATJ250	4
DB12-1000	500	1000	287		
DB12T-1000	500	1000	315	CATJ250	4
DB12-1100	550	1100	314		
DB12T-1100	550	1100	350	CATJ250	5



Model	Capacity SAE [l]	Cutting edge width [mm]	Weight [kg]*	Teeth system	Quantity of teeth
CB08-400	190	400	120		
CB08T-400	190	400	145	CAT J250	3
CB12-500	275	500	145		
CB12T-500	275	500	166	CAT J250	3

\* Weight of the bucket excluding adapter



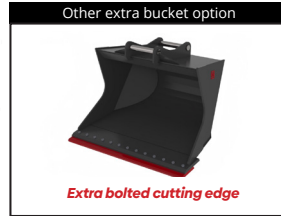
\* Weight of the bucket excluding adapter

### GRADING BUCKET SCANDINAVIAN TYPE (GB) FOR EXCAVATOR WEIGHT 8-12 T

Scandinavian-type grading buckets (GB) are manufactured with pins for direct mounting on the arm of excavator or with an adapter for a quick coupler. The special design of the bucket with bent sides makes it easier to maneuver, fill and empty the excavated material. The buckets are made entirely of HARDOX 500 TUF steel, which makes them lighter than competitive buckets, while significantly increasing wear resistance and durability.



Model	Capacity SAE [l]	Cutting edge width [mm]	Weight [kg]
GB08-1400	400	1400	145
GB09-1400	450	1400	155
GB09-1500	450	1500	155
GB11-1500 light	500	1500	165
GB11-1500	500	1500	200
GB12-1500 light	550	1500	175
GB12-1500	550	1500	210



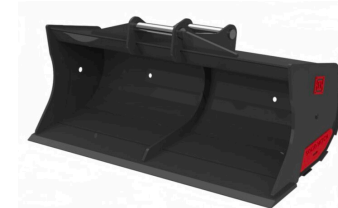
\* Weight of the bucket excluding adapter

The rigid ditch cleaning buckets (DCB) are manufactured with direct assembly on the excavator arm pins or with an adapter for a quick coupler. The buckets are made entirely of HARDOX 500 TUF steel which makes them lighter than competitive buckets, while significantly increasing wear resistance and durability.

### DITCH CLEANING BUCKET (DCB) FOR EXCAVATOR WEIGHT 8-12 T



Model	Capacity SAE [l]	Cutting edge width [mm]	Weight [kg]*
DCB08-1400	360	1400	171
DCB08-1500	400	1500	191
DCB08-1600	430	1600	206
DCB12-1800	490	1800	229
DCB12-2000	550	2000	257



\* Weight of the bucket excluding adapter



### TILT CLEANING BUCKET (TCB) FOR EXCAVATOR WEIGHT 8-12 T

Tilting ditch cleaning buckets (TCB) are manufactured with direct assembly on the excavator arm pins or with an adapter for a quick coupler. The buckets are made entirely of HARDOX 500 TUF steel which makes them lighter than competitive buckets, while significantly increasing wear resistance and durability.



Model	Capacity SAE [l]	Cutting edge width [mm]	Quantity of cylinders [Qty]	Weight [kg]*	Tilt [°]
TCB08-1400	360	1400	1	260	2x45°
TCB08-1500	400	1500	1	280	2x45°
TCB08-1600	430	1600	1	295	2x45°
TCB10-1800	490	1800	1	325	2x45°
TCB12-1800	490	1800	2	390	2x45°
TCB12-2000	550	2000	2	410	2x45°



\* Weight of the bucket excluding adapter

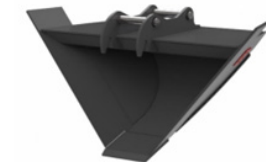


The trapezoidal bucket (VB) are manufactured with direct assembly on the excavator arm pins or with an adapter for a quick coupler. The buckets are made entirely of HARDOX 500 TUF steel which makes them lighter than competitive buckets, while significantly increasing wear resistance and durability.

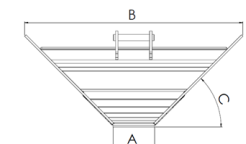
### TRAPEZOIDAL BUCKET (VB) FOR EXCAVATOR WEIGHT 8-12 T



Model	Capacity SAE [l]	Cutting edge width A [mm]	Cutting edge width B [mm]	Bucket tilt angle C [°]	Weight [kg]
VB8-300/1700	400	300	1700	45	230
VB8-400/1800	500	400	1800	45	255



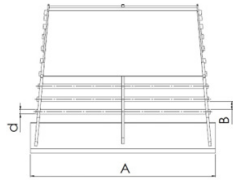
\* Weight of the bucket excluding adapter



## TOOLS FOR MACHINE WEIGHT 8-12 T

The sorting bucket (SB) are manufactured with direct assembly on the excavator arm pins or with an adapter for a quick coupler. The buckets are made entirely of HARDOX 500 TUF steel which makes them lighter than competitive buckets, while significantly increasing wear resistance and durability.

### SORTING BUCKET (SB) FOR EXCAVATOR WEIGHT 8-12 T



Other extra bucket option

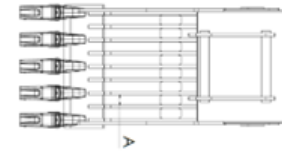


Model	Capacity SAE [l]	Cutting edge width A [mm]	Bar diameter [mm]	Bar spacing [mm]	Weight [kg]
SB08-1400	400	1400	30	50	205
SB08-1400	450	1400	30	50	215
SB11-1500	450	1500	30	50	225

\* Weight of the bucket excluding adapter

Skeleton buckets (SKB) are manufactured with direct assembly on the excavator arm pins or with an adapter for a quick coupler. The buckets are made entirely of HARDOX 500 TUF steel which makes them lighter than competitive buckets, while significantly increasing wear resistance and durability.

### SKELETON BUCKET (SKB) FOR EXCAVATOR WEIGHT 8-12 T



Other extra bucket option



Model	Capacity SAE [l]	Cutting edge width [mm]	Distance between ribs A [mm]	Weight [kg]	Teeth model	Liczba zębów
SKB08-1000	450	1000	75	220		
SKB08T-1000	450	1000	75	255	CATJ250	5
SKB11-1100	500	1100	75	240		
SKB11T-1100	500	1100	75	275	CATJ250	5
SKB11-1200	550	1200	75	260		
SKB11T-1200	550	1200	75	302	CATJ250	6

\* Weight of the bucket excluding adapter

The ripping teeth are manufactured with pins for direct mounting on the arm of excavator or with an adapter for a quick coupler. The ripping teeth are made of S355 steel and HARDOX 500 TUF, which significantly increases wear resistance and durability.

### RIPPER FOR EXCAVATOR WEIGHT 8-12 T



Model	Wysokość H [mm]	Teeth system	Weight [kg]
R12-800	800	CATJ300	140



\* Weight of the ripper excluding attachment

The cutters are manufactured with pins for direct mounting on the arm of excavator or with an adapter for a quick connector. The cutters are made of S355 and HARDOX 500 TUF steel, which significantly increases wear resistance and durability.

### ASPHALT CUTTER FOR EXCAVATOR WEIGHT 8-12 T



Model	Depth of cut Z [mm]	Cutting disc diameter D [mm]	Weight [kg]
AC10-470	150	470	55



\* Weight of the asphalt cutter excluding adapter



**GRADING BEAM (GRB) FOR EXCAVATOR WEIGHT 8-12 T**

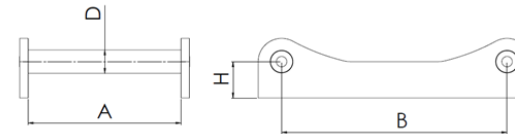
**ADAPTERS, TOP BRACKETS FOR EXCAVATOR WEIGHT 8-12 T**

The grading beam (GRB) are manufactured with pins for direct mounting on the arm of excavator or with an adapter for a quick connector. The grading beam are made of S355 and HARDOX 500 TUF steel, which significantly increases wear resistance and durability.



Model	Width W [mm]	Roller diameter D [mm]	Weight [kg]*
GRB08-1500	1500	245	318
GRB08-2000	2000	245	415
GRB12-2500	2500	245	450

\* Weight of the grading beam excluding adapter

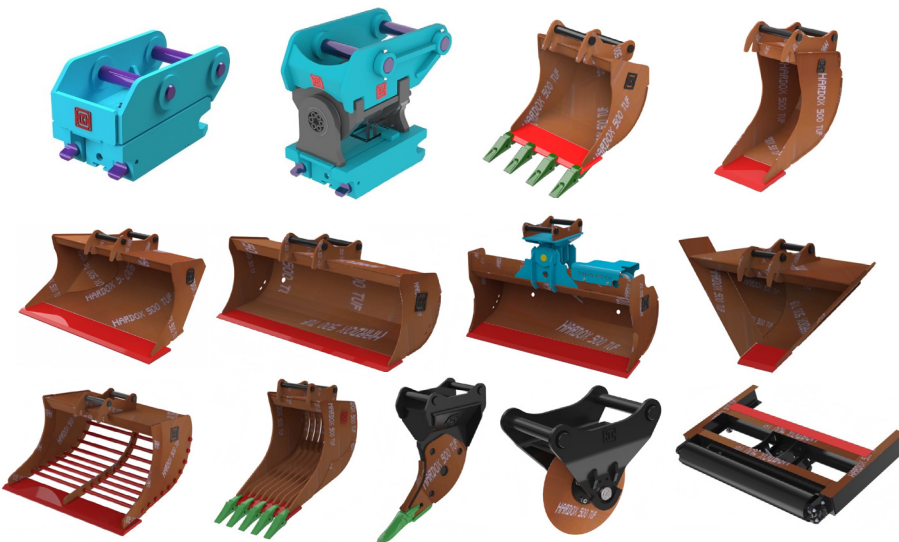


Model	A [mm]	B [mm]	D [mm]	H [mm]
AS45	292	430	45	70
AS45-HIGH	292	430	45	210
AS50	272	430	50	70
AS50-HIGH	272	430	50	210

\* Other adapters in option

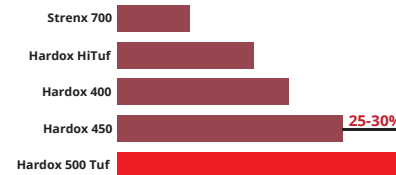


**Material specification**



- STEEL HARDOX 500 TUF
- WEAR RESISTANT STEEL HB 500
- ROD CROMAX
- STEEL S690QL
- STEEL S355

Service Life



Grade	Increase in relative service life
Hardox 400 → 500 Tuf	60-70%
Hardox 450 → 500 Tuf	25-30%

Increasing bucket life using Hardox 500 TUF steel. SSAB company data

## TOOLS FOR MACHINE WEIGHT 12-18 T

Symmetrical hydraulic quick couplers for excavators ensure high safety and efficiency when replacing work equipment on construction machines thanks to the process of opening and closing the coupler by the excavator's hydraulics. The body is made of high-strength and wear-resistant steel and equipped with hardened and chrome-plated pins to increase wear resistance and safety at work.

Model
QC-S50
QC-S60
QC-L-HS08
QC-CW20S
QC-CW20
QC-CW30S
QC-CW30

### HYDRAULIC QUICK COUPLERS FOR EXCAVATOR WEIGHT 12-18 T



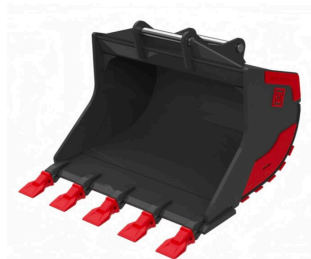
\* Total weight of the quick coupler depends on machine model

Digging buckets for excavators are standardly equipped with welded or bolted teeth of the CAT J system. The buckets are manufactured with direct assembly on the excavator arm pins or with an adapter for a quick coupler. The buckets are made entirely of HARDOX 500 TUF which makes them lighter than competitive buckets, while significantly increasing wear resistance and durability.

### DIGGING BUCKET (DB) FOR EXCAVATOR WEIGHT 12-18 T



Model	Capacity SAE [l]	Cutting edge width [mm]	Weight [kg]*	Teeth system	Quantity of teeth
DB13-500	300	500	165		
DB13T-500	300	500	187	CATJ250	3
DB14-600	400	600	220		
DB14T-600	400	600	256	CATJ300	3
DB14-700	500	700	247		
DB14T-700	500	700	283	CATJ300	3
DB14-800	600	800	275		
DB14T-800	600	800	323	CATJ300	4
DB16-900	700	900	300		
DB16T-900	700	900	348	CATJ300	4
DB18-1000	800	1000	325		
DB18T-1000	800	1000	373	CATJ300	4
DB18-1100	900	1100	350		
DB18T-1100	900	1100	410	CATJ300	5
DB18-1200	1000	1200	375		
DB18T-1200	1000	1200	435	CATJ300	5

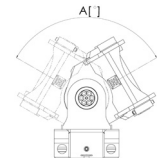


\* Weight of the bucket excluding adapter

The hydraulic quick coupler with a tilting head is a tool for the most difficult tasks, allowing the excavator's working equipment to be tilted to the right or left by an angle of 90 degrees for excavators weighing up to 13 tons and 70 degrees for excavators weighing up to 38 tons. The pivoting quick coupler allows you to significantly speed up work and reduce fuel consumption and machine wear by reducing the necessary number of movements and adjustments of the excavator. The hydraulic quick coupler is equipped with a reliable and high-quality rotor from the renowned German company HKS with 45 years of experience in the hydraulic industry + Helac.

### TILT HYDRAULIC QUICK COUPLERS FOR EXCAVATOR WEIGHT 12-18 T

Model/HKS motor	HKS motor tilt A [°]	Model/Helac motor	Helac motor tilt A [°]
SU200_S50	2x90°	SUH180_S50	2x60°
SU200_S60	2x90°	SUH180_S60	2x60°
SU200_L-HS08	2x90°	SUH180_L-HS08	2x60°
SU200_L-HS10	2x90°	SUH180_L-HS10	2x60°
SU200_CW20S	2x90°	SUH180_CW20S	2x60°
SU200_CW20	2x90°	SUH180_CW20	2x60°
SU240_S60	2x50°, 2x70°, 2x90°	SUH180_CW30S	2x60°
SU240_L-HS10	2x50°, 2x70°, 2x90°	SUH180_CW30	2x60°
SU240_CW20S	2x50°, 2x70°, 2x90°		
SU240_CW20	2x50°, 2x70°, 2x90°		



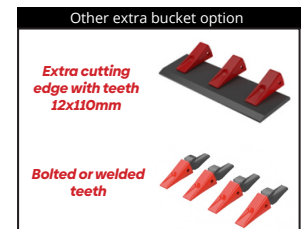
\* Total weight of the quick coupler depends on machine model

The cable buckets (CB) are manufactured with direct assembly on the excavator arm pins or with an adapter for a quick coupler. The buckets are made entirely of HARDOX 500 TUF steel which makes them lighter than competitive buckets, while significantly increasing wear resistance and durability. The buckets can be additionally equipped with bolted or welded teeth.

### CABLE BUCKET (CB) FOR EXCAVATOR WEIGHT 12-18 T



Model	Capacity SAE [l]	Cutting edge width [mm]	Weight [kg]*	Teeth system	Quantity of teeth
CB13-400	300	400	155		
CB13T-400	300	400	177	CAT J250	3
CB15-500	350	500	200		
CB15T-500	350	500	236	CAT J300	3
CB18-600	400	600	225		
CB18T-600	400	600	261	CAT J300	3



\* Weight of the bucket excluding adapter

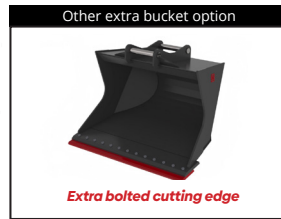
### GRADING BUCKET SCANDINAVIAN TYPE (GB) FOR EXCAVATOR WEIGHT 12-18 T

Scandinavian-type grading buckets (GB) are manufactured with pins for direct mounting on the arm of excavator or with an adapter for a quick coupler. The special design of the bucket with bent sides makes it easier to maneuver, fill and empty the excavated material. The buckets are made entirely of HARDOX 500 TUF steel, which makes them lighter than competitive buckets, while significantly increasing wear resistance and durability.



Model	Capacity SAE [l]	Cutting edge width [mm]	Weight [kg]
GB12-1400	500	1400	240
GB13-1500	550	1500	250
GB14-1500	600	1500	303
GB15-1500	650	1500	321
GB15-1600	700	1600	340
GB16-1600	750	1600	360
GB18-1700	900	1700	409

\* Weight of the bucket excluding adapter



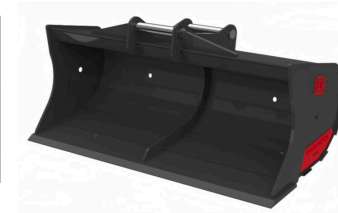
The rigid ditch cleaning buckets (DCB) are manufactured with direct assembly on the excavator arm pins or with an adapter for a quick coupler. The buckets are made entirely of HARDOX 500 TUF steel which makes them lighter than competitive buckets, while significantly increasing wear resistance and durability.

### DITCH CLEANING BUCKET (DCB) FOR EXCAVATOR WEIGHT 12-18 T



Model	Capacity SAE [l]	Cutting edge width [mm]	Weight [kg]*
DCB12-1400	450	1400	220
DCB12-1500	500	1500	235
DCB14-1600	550	1600	250
DCB16-1800	600	1800	305
DCB18-2000	650	2000	330

\* Weight of the bucket excluding adapter



### TILT CLEANING BUCKET (TCB) FOR EXCAVATOR WEIGHT 12-18 T

Tilting ditch cleaning buckets (TCB) are manufactured with direct assembly on the excavator arm pins or with an adapter for a quick coupler. The buckets are made entirely of HARDOX 500 TUF steel which makes them lighter than competitive buckets, while significantly increasing wear resistance and durability.



Model	Capacity SAE [l]	Cutting edge width [mm]	Quantity of cylinders (Qty)	Weight [kg]*	Tilt [°]
TCB12-1400	450	1400	2	390	2x45°
TCB12-1500	500	1500	2	405	2x45°
TCB14-1600	550	1600	2	420	2x45°
TCB16-1800	600	1800	2	505	2x45°
TCB18-2000	650	2000	2	530	2x45°

\* Weight of the bucket excluding adapter



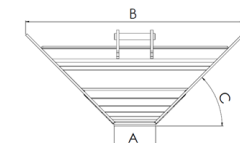
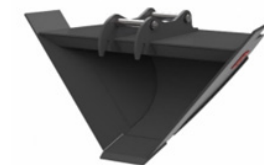
The trapezoidal bucket (VB) are manufactured with direct assembly on the excavator arm pins or with an adapter for a quick coupler. The buckets are made entirely of HARDOX 500 TUF steel which makes them lighter than competitive buckets, while significantly increasing wear resistance and durability.

### TRAPEZOIDAL BUCKET (VB) FOR EXCAVATOR WEIGHT 12-18 T



Model	Capacity SAE [l]	Cutting edge width A [mm]	Cutting edge width B [mm]	Bucket tilt angle C [°]	Weight [kg]
VB13-300/1800	550	300	1800	45	282
VB18-400/2000	650	400	2000	45	330

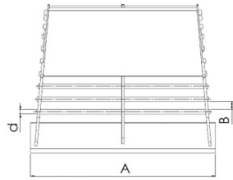
\* Weight of the bucket excluding adapter



## TOOLS FOR MACHINE WEIGHT 12-18 T

The sorting bucket (SB) are manufactured with direct assembly on the excavator arm pins or with an adapter for a quick coupler. The buckets are made entirely of HARDOX 500 TUF steel which makes them lighter than competitive buckets, while significantly increasing wear resistance and durability.

### SORTING BUCKET (SB) FOR EXCAVATOR WEIGHT 12-18 T



Model	Capacity SAE [l]	Cutting edge width A [mm]	Bar diameter [mm]	Bar spacing [mm]	Weight [kg]
SB12-1500	550	1500	30	50	260
SB14-1500	650	1500	45	70	365
SB16-1600	750	1600	45	70	385
SB18-1700	900	1700	45	70	425

\* Weight of the bucket excluding adapter

The ripping teeth are manufactured with pins for direct mounting on the arm of excavator or with an adapter for a quick connector. The ripping teeth are made of S355 steel and HARDOX 500 TUF, which significantly increases wear resistance and durability.

### RIPPER FOR EXCAVATOR WEIGHT 12-18 T



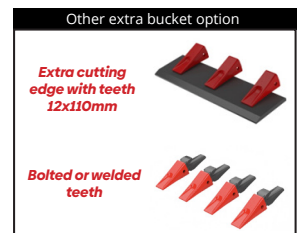
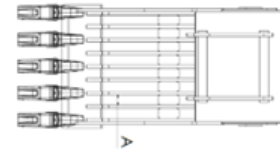
Model	Height H [mm]	Teeth system	Weight [kg]
R15-900	900	CATJ350	265
R18-1200	1200	CATJ350	340



\* Weight of the ripper excluding attachment

Skeleton buckets (SKB) are manufactured with direct assembly on the excavator arm pins or with an adapter for a quick coupler. The buckets are made entirely of HARDOX 500 TUF steel which makes them lighter than competitive buckets, while significantly increasing wear resistance and durability.

### SKELETON BUCKET (SKB) FOR EXCAVATOR WEIGHT 12-18 T



Model	Capacity SAE [l]	Cutting edge width [mm]	Distance between ribs A [mm]	Weight [kg]	Teeth model	Quantity of teeth
SKB12-1000	550	1000	80	272		
SKB12T-1000	550	1000	80	307	CATJ250	5
SKB13-1200	780	1200	80	355		
SKB13T-1200	780	1200	80	400	CATJ250	5
SKB13-1300	880	1300	80	402		
SKB13T-1300	880	1300	80	462	CATJ300	5
SKB14-1400	1000	1400	80	520		
SKB14T-1400	1000	1400	80	592	CATJ300	6
SKB18-1500	1100	1500	80	563		
SKB18T-1500	1100	1500	80	633	CATJ300	6

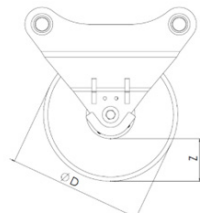
\* Weight of the bucket excluding adapter

The cutters are manufactured with pins for direct mounting on the arm of excavator or with an adapter for a quick connector. The cutters are made of S355 and HARDOX 500 TUF steel, which significantly increases wear resistance and durability.

### ASPHALT CUTTER FOR EXCAVATOR WEIGHT 12-18 T



Model	Depth of cut Z [mm]	Cutting disc diameter D [mm]	Weight [kg]
AC15-470	150	470	70



\* Weight of the asphalt cutter excluding adapter

**GRADING BEAM (GRB) FOR EXCAVATOR WEIGHT 12-18 T**

The grading beam (GRB) are manufactured with pins for direct mounting on the arm of excavator or with an adapter for a quick connector. The grading beam are made of S355 and HARDOX 500 TUF steel, which significantly increases wear resistance and durability.

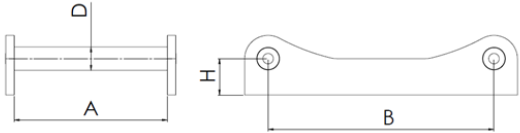


Model	Width W [mm]	Roller diameter D [mm]	Weight [kg]*
GRB08-1500	1500	245	318
GRB08-2000	2000	245	415
GRB12-2500	2500	245	450
GRB16-3000	3000	245	520



\* Weight of the grading beam excluding adapter

**ADAPTERS, TOP BRACKETS FOR EXCAVATOR WEIGHT 12-18 T**

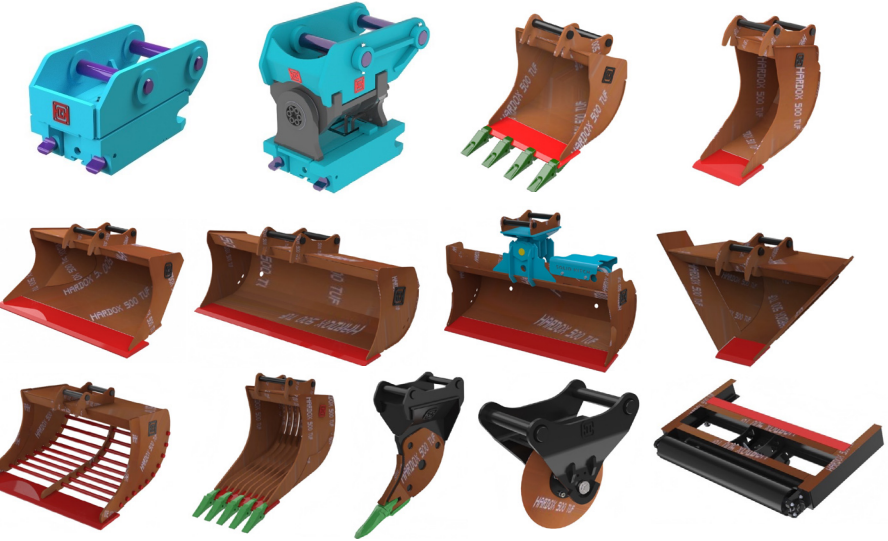


Model	A [mm]	B [mm]	D [mm]	H [mm]
AS50	272	430	50	70
AS50-HIGH	272	430	50	210
AS60	342	480	60	85
AS60-HIGH	342	480	60	240
AS60H	342	480	60	85
AS60H-HIGH	342	480	60	240
AS65	440	530	65	110
AS65-HIGH	440	530	65	240
AS65H	440	530	65	110
AS65H-HIGH	440	530	65	240



\* Other adapters in option

**Material specification**



- STEEL HARDOX 500 TUF
- WEAR RESISTANT STEEL HB 500
- ROD CROMAX
- STEEL S690QL
- STEEL S355

Service Life



Grade	Increase in relative service life
Hardox 400 → 500 Tuf	60-70%
Hardox 450 → 500 Tuf	25-30%

Increasing bucket life using Hardox 500 TUF steel. SSAB company data

## TOOLS FOR MACHINE WEIGHT 18-22 T

Symmetrical hydraulic quick couplers for excavators ensure high safety and efficiency when replacing work equipment on construction machines thanks to the process of opening and closing the coupler by the excavator's hydraulics. The body is made of high-strength and wear-resistant steel and equipped with hardened and chrome-plated pins to increase wear resistance and safety at work.

Model
QC-S60
QC-S70
QC-L-HS10
QC-L-HS21
QC-CW30S
QC-CW30

\* Total weight of the quick coupler depends on machine model



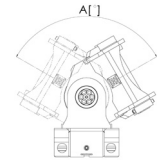
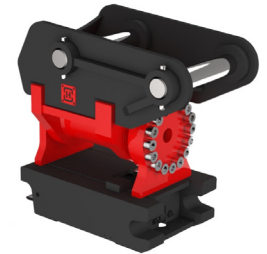
## HYDRAULIC QUICK COUPLERS FOR EXCAVATOR WEIGHT 18-22 T

The hydraulic quick coupler with a tilting head is a tool for the most difficult tasks, allowing the excavator's working equipment to be tilted to the right or left by an angle of 90 degrees for excavators weighing up to 13 tons and 70 degrees for excavators weighing up to 38 tons. The pivoting quick coupler allows you to significantly speed up work and reduce fuel consumption and machine wear by reducing the necessary number of movements and adjustments of the excavator. The hydraulic quick coupler is equipped with a reliable and high-quality rotor from the renowned German company HKS with 45 years of experience in the hydraulic industry + Helac.

Model/HKS motor	HKS motor tilt A [°]	Model/Helac motor	Helac motor tilt A [°]
SU240_S60	2x50,2x70°,2x90°	SUH240_S60	2x60°
SU240_L-HS10	2x50,2x70°,2x90°	SUH240_S70	2x60°
SU250_S60	2x50,2x70°	SUH240_L-HS10	2x60°
SU250_S70	2x50,2x70°	SUH240_L-HS21	2x60°
SU250_L-HS10	2x50,2x70°	SUH240_CW30S	2x60°
SU250_L-HS21	2x50,2x70°	SUH240_CW30	2x60°
SU250_CW30S	2x50,2x70°		
SU250_CW30	2x50,2x70°		

\* Total weight of the quick coupler depends on machine model

## TILT HYDRAULIC QUICK COUPLERS FOR EXCAVATOR WEIGHT 18-22 T



Digging buckets for excavators are standardly equipped with welded or bolted teeth of the CAT J system. The buckets are manufactured with direct assembly on the excavator arm pins or with an adapter for a quick coupler. The buckets are made entirely of HARDOX 500 TUF which makes them lighter than competitive buckets, while significantly increasing wear resistance and durability.

## DIGGING BUCKET (DB) FOR EXCAVATOR WEIGHT 18-22 T



## CABLE BUCKET (CB) FOR EXCAVATOR WEIGHT 18-22 T

The cable buckets (CB) are manufactured with direct assembly on the excavator arm pins or with an adapter for a quick coupler. The buckets are made entirely of HARDOX 500 TUF steel which makes them lighter than competitive buckets, while significantly increasing wear resistance and durability. The buckets can be additionally equipped with bolted or welded teeth.

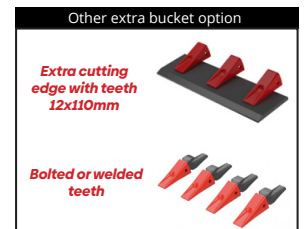
Model	Capacity SAE [l]	Cutting edge width [mm]	Weight [kg]*	Teeth system	Quantity of teeth
DB18-600	480	600	364		
DB18T-600	480	600	400	CATJ300	3
DB18-700	580	700	392		
DB18T-700	580	700	431	CATJ300	3
DB18-800	680	800	420		
DB18T-800	680	800	472	CATJ300	4
DB18-900	780	900	447		
DB18T-900	780	900	499	CATJ300	4
DB18-1000	880	1000	465		
DB18T-1000	880	1000	533	CATJ350	4
DB20-1100	1080	1100	495		
DB20T-1100	1080	1100	563	CATJ350	4
DB22-1200	1180	1200	525		
DB22T-1200	1180	1200	610	CATJ350	5
DB22-1300	1280	1300	575		
DB22T-1300	1280	1300	660	CATJ350	5

\* Weight of the bucket excluding adapter



Model	Capacity SAE [l]	Cutting edge width [mm]	Weight [kg]*	Teeth system	Quantity of teeth
CB18-400	350	500	236		
CB18T-400	350	500	272	CAT J300	3
CB20-500	450	600	264		
CB20T-500	450	600	300	CAT J300	3
CB22-500	550	700	292		
CB22T-500	550	700	328	CAT J300	3

\* Weight of the bucket excluding adapter

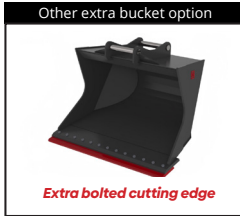
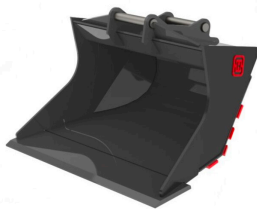


Scandinavian-type grading buckets (GB) are manufactured with pins for direct mounting on the arm of excavator or with an adapter for a quick coupler. The special design of the bucket with bent sides makes it easier to maneuver, fill and empty the excavated material. The buckets are made entirely of HARDOX 500 TUF steel, which makes them lighter than competitive buckets, while significantly increasing wear resistance and durability.

### GRADING BUCKET SCANDINAVIAN TYPE (GB) FOR EXCAVATOR WEIGHT 18-22 T



Model	Capacity SAE [l]	Cutting edge width [mm]	Weight [kg]
GB18-1800	900	1800	470
GB20-1800	1000	1800	485
GB22-1800	1100	1800	500



\* Weight of the bucket excluding adapter

Tilting ditch cleaning buckets (TCB) are manufactured with direct assembly on the excavator arm pins or with an adapter for a quick coupler. The buckets are made entirely of HARDOX 500 TUF steel which makes them lighter than competitive buckets, while significantly increasing wear resistance and durability.

### TILT CLEANING BUCKET (TCB) FOR EXCAVATOR WEIGHT 18-22 T



Model	Capacity SAE [l]	Cutting edge width [mm]	Quantity of cylinders [Qty]	Weight [kg]*
TCB18-1800	700	1800	2	530
TCB20-2000	800	2000	2	563
TCB22-2200	900	2200	2	596



\* Weight of the bucket excluding adapter



The rigid ditch cleaning buckets (DCB) are manufactured with direct assembly on the excavator arm pins or with an adapter for a quick coupler. The buckets are made entirely of HARDOX 500 TUF steel which makes them lighter than competitive buckets, while significantly increasing wear resistance and durability.

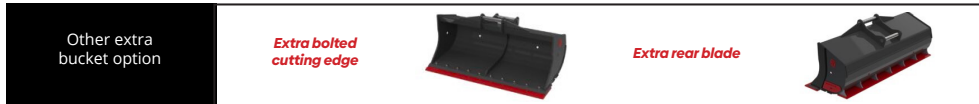
### DITCH CLEANING BUCKET (DCB) FOR EXCAVATOR WEIGHT 18-22 T



Model	Capacity SAE [l]	Cutting edge width [mm]	Weight [kg]*
DCB18-1800	700	1800	350
DCB20-2000	800	2000	383
DCB22-2200	900	2200	416



\* Weight of the bucket excluding adapter

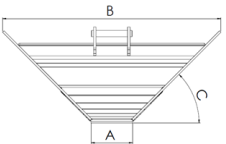
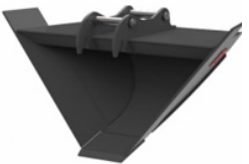


The trapezoidal bucket (VB) are manufactured with direct assembly on the excavator arm pins or with an adapter for a quick coupler. The buckets are made entirely of HARDOX 500 TUF steel which makes them lighter than competitive buckets, while significantly increasing wear resistance and durability.

### TRAPEZOIDAL BUCKET (VB) FOR EXCAVATOR WEIGHT 18-22 T



Model	Capacity SAE [l]	Cutting edge width A [mm]	Cutting edge width B [mm]	Bucket tilt angle C [°]	Weight [kg]
VB18-400/2300	750	400	2300	45	450
VB22-400/2400	900	400	2400	45	550

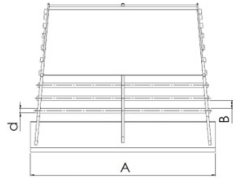


\* Weight of the bucket excluding adapter

## TOOLS FOR MACHINE WEIGHT 18-22 T

The sorting bucket (SB) are manufactured with direct assembly on the excavator arm pins or with an adapter for a quick coupler. The buckets are made entirely of HARDOX 500 TUF steel which makes them lighter than competitive buckets, while significantly increasing wear resistance and durability.

### SORTING BUCKET (SB) FOR EXCAVATOR WEIGHT 18-22 T



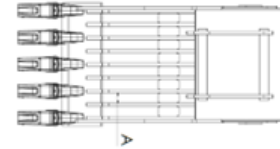
Model	Capacity SAE [l]	Cutting edge width A [mm]	Bar diameter [mm]	Bar spacing [mm]	Weight [kg]
SB18-1800	900	1800	45	70	450
SB20-1800	1000	1800	45	70	500
SB22-1800	1100	1800	45	70	560



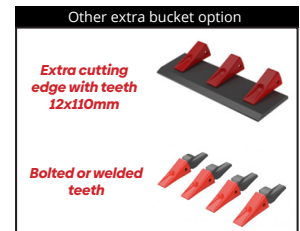
\* Total weight of the quick coupler depends on machine model

Skeleton buckets (SKB) are manufactured with direct assembly on the excavator arm pins or with an adapter for a quick coupler. The buckets are made entirely of HARDOX 500 TUF steel which makes them lighter than competitive buckets, while significantly increasing wear resistance and durability.

### SKELETON BUCKET (SKB) FOR EXCAVATOR WEIGHT 18-22 T



Model	Capacity SAE [l]	Cutting edge width [mm]	Distance between ribs A [mm]	Weight [kg]	Teeth model	Quantity of teeth
SKB18-1200	900	1200	100	490		
SKB18T-1200	900	1200	100	555	CATJ300	5
SKB20-1300	1000	1300	100	540		
SKB20T-1300	1000	1300	100	618	CATJ300	6
SKB22-1400	1100	1400	100	590		
SKB22T-1400	1100	1400	100	668	CATJ300	6



\* Weight of the bucket excluding adapter

The ripping teeth are manufactured with pins for direct mounting on the arm of excavator or with an adapter for a quick coupler. The ripping teeth are made of S355 steel and HARDOX 500 TUF, which significantly increases wear resistance and durability.

### RIPPER FOR EXCAVATOR WEIGHT 18-22 T



Model	Height H [mm]	Teeth system	Weight [kg]
R18-1200	1200	CATJ350	340
R26-1400	1400	CATJ460	475



\* Weight of the ripper excluding attachment

The cutters are manufactured with pins for direct mounting on the arm of excavator or with an adapter for a quick connector. The cutters are made of S355 and HARDOX 500 TUF steel, which significantly increases wear resistance and durability.

### ASPHALT CUTTER FOR EXCAVATOR WEIGHT 18-22 T



Model	Depth of cut Z [mm]	Cutting disc diameter D [mm]	Weight [kg]
AC20-470	150	470	90



\* Weight of the asphalt cutter excluding adapter



### GRADING BEAM (GRB) FOR EXCAVATOR WEIGHT 18-22 T

### ADAPTERS, TOP BRACKETS FOR EXCAVATOR WEIGHT 18-22 T

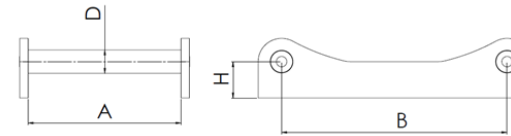
The grading beam (GRB) are manufactured with pins for direct mounting on the arm of excavator or with an adapter for a quick connector. The grading beam are made of S355 and HARDOX 500 TUF steel, which significantly increases wear resistance and durability.



S60 36kg  
S65 50kg  
S70 70kg  
S70/55 80kg  
E-HS10 85kg  
E-HS21 140kg  
CW-30 90kg  
CW-30S 90kg

Model	Width W (mm)	Roller diameter D (mm)	Weight (kg)*
GRB08-1500	1500	245	318
GRB08-2000	2000	245	415
GRB12-2500	2500	245	450
GRB16-3000	3000	245	520

\* Weight of the grading beam excluding adapter

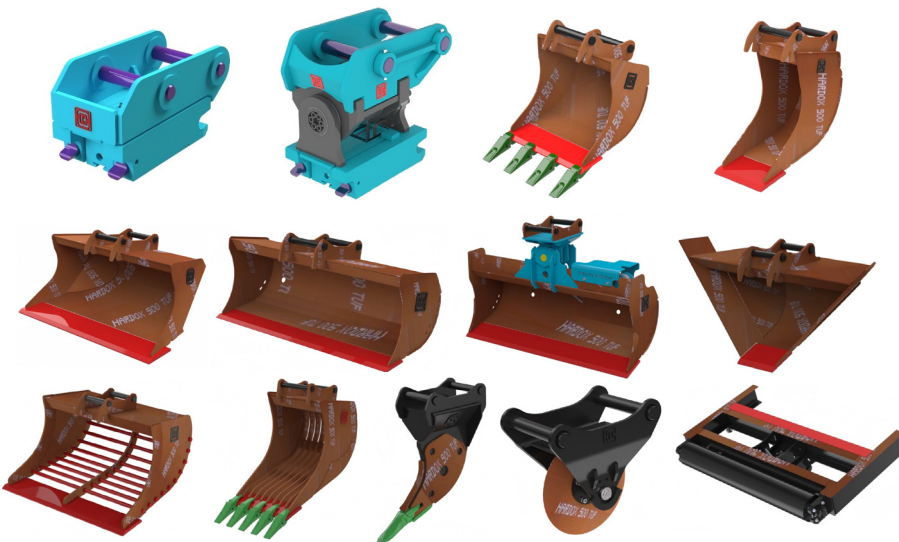


Model	A (mm)	B (mm)	D (mm)	H (mm)
AS60	342	480	60	85
AS60-HIGH	342	480	60	240
AS60H	342	480	60	85
AS60H-HIGH	342	480	60	240

\* Other adapters in option

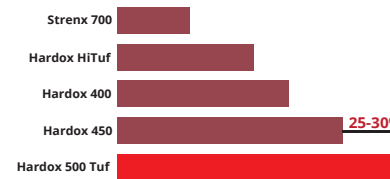


## Material specification



STEEL HARDOX 500 TUF    WEAR RESISTANT STEEL HB 500    ROD CROMAX  
STEEL S355    STEEL S690QL

Service Life



Grade	Increase in relative service life
Hardox 400 → 500 Tuf	60-70%
Hardox 450 → 500 Tuf	25-30%

Increasing bucket life using Hardox 500 TUF steel. SSAB company data

## TOOLS FOR MACHINE WEIGHT 22-28 T

Symmetrical hydraulic quick couplers for excavators ensure high safety and efficiency when replacing work equipment on construction machines thanks to the process of opening and closing the coupler by the excavator's hydraulics. The body is made of high-strength and wear-resistant steel and equipped with hardened and chrome-plated pins to increase wear resistance and safety at work.

Model
QC-S70
QC-S80
QC-L-HS21
QC-L-HS25
QC-CW40S
QC-CW40

### HYDRAULIC QUICK COUPLERS FOR EXCAVATOR WEIGHT 22-28 T



\* Total weight of the quick coupler depends on machine model

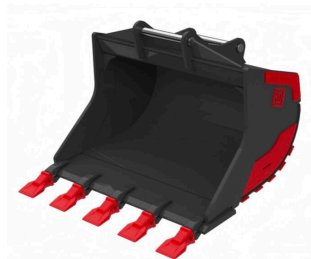
Digging buckets for excavators are standardly equipped with welded or bolted teeth of the CAT J system. The buckets are manufactured with direct assembly on the excavator arm pins or with an adapter for a quick coupler. The buckets are made entirely of HARDOX 500 TUF which makes them lighter than competitive buckets, while significantly increasing wear resistance and durability.

### DIGGING BUCKET (DB) FOR EXCAVATOR WEIGHT 22-28 T



Model	Capacity SAE [l]	Cutting edge width [mm]	Weight [kg]*	Teeth system	Quantity of teeth
DB22-800	800	800	420		
DB22T-800	800	800	474	CATJ350	4
DB22-900	900	900	460		
DB22T-900	900	900	514	CATJ350	4
DB22-1000	1000	1000	510		
DB22T-1000	1000	1000	563	CATJ350	4
DB22-1100	1100	1100	550		
DB22T-1100	1100	1100	603	CATJ350	4
DB23-1200	1200	1200	595		
DB23T-1200	1200	1200	648	CATJ350	4
DB25-1300	1300	1300	635		
DB25T-1300	1300	1300	701	CATJ350	5
DB28-1400	1450	1400	670		
DB28T-1400	1450	1400	736	CATJ350	5

\* Weight of the bucket excluding adapter



The hydraulic quick coupler with a tilting head is a tool for the most difficult tasks, allowing the excavator's working equipment to be tilted to the right or left by an angle of 90 degrees for excavators weighing up to 13 tons and 70 degrees for excavators weighing up to 38 tons. The pivoting quick coupler allows you to significantly speed up work and reduce fuel consumption and machine wear by reducing the necessary number of movements and adjustments of the excavator. The hydraulic quick connector is equipped with a reliable and high-quality rotor from the renowned German company HKS with 45 years of experience in the hydraulic industry.

### TILT HYDRAULIC QUICK COUPLERS FOR EXCAVATOR WEIGHT 22-28 T

Model/ HKS motor	HKS motor tilt HKS A [°]	Model/ Helac motor	Helac motor tilt A [°]
SU250_S70	2x50,2x70°	SUH240_S70	2x60°
SU250_L-HS21	2x50,2x70°	SUH240_L-HS21	2x60°
SU250_CW40S	2x50,2x70°	SUH240_CW40S	2x60°
SU250_CW40	2x50,2x70°	SUH240_CW40	2x60°
SU260_S70	2x50,2x70°	SUH300_S70	2x60°
SU260_S80	2x50,2x70°	SUH300_S80	2x60°
SU260_L-HS21	2x50,2x70°	SUH300_L-HS21	2x60°
SU260_L-HS25	2x50,2x70°	SUH300_L-HS25	2x60°
SU260_CW40S	2x50,2x70°	SUH300_CW40S	2x60°
SU260_CW40	2x50,2x70°	SUH300_CW40	2x60°
SU270_S70	2x50,2x70°		
SU270_S80	2x50,2x70°		
SU270_L-HS21	2x50,2x70°		
SU270_L-HS25	2x50,2x70°		
SU270_CW40S	2x50,2x70°		
SU270_CW40	2x50,2x70°		

\* Total weight of the quick coupler depends on machine model

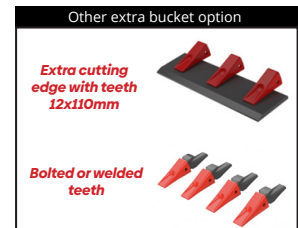
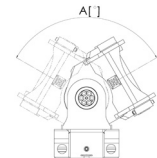
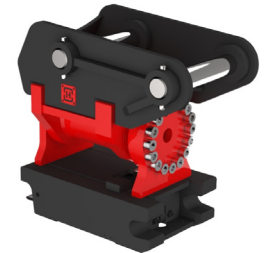
The cable buckets (CB) are manufactured with direct assembly on the excavator arm pins or with an adapter for a quick coupler. The buckets are made entirely of HARDOX 500 TUF steel which makes them lighter than competitive buckets, while significantly increasing wear resistance and durability. The buckets can be additionally equipped with bolted or welded teeth.

### CABLE BUCKET (CB) FOR EXCAVATOR WEIGHT 22-28 T



Model	Capacity SAE [l]	Cutting edge width [mm]	Waga [kg]*	Teeth system	Quantity of teeth
CB22-600	550	600	305		
CB22T-600	550	600	345	CATJ350	3
CB25-700	650	700	350		
CB25T-700	650	700	390	CATJ350	3
CB28-800	750	800	385		
CB28T-800	750	800	425	CATJ350	3

\* Weight of the bucket excluding adapter

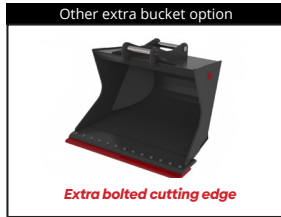


Scandinavian-type grading buckets (GB) are manufactured with pins for direct mounting on the arm of excavator or with an adapter for a quick coupler. The special design of the bucket with bent sides makes it easier to maneuver, fill and empty the excavated material. The buckets are made entirely of HARDOX 500 TUF steel, which makes them lighter than competitive buckets, while significantly increasing wear resistance and durability.

### GRADING BUCKET SCANDINAVIAN TYPE (GB) FOR EXCAVATOR WEIGHT 22-28 T



Model	Capacity SAE [l]	Cutting edge width [mm]	Weight [kg]
GB24-1800	1200	1800	645
GB25-1900	1300	1900	695
GB28-2000	1400	2000	745



\* Weight of the bucket excluding adapter

The rigid ditch cleaning buckets (DCB) are manufactured with direct assembly on the excavator arm pins or with an adapter for a quick coupler. The buckets are made entirely of HARDOX 500 TUF steel which makes them lighter than competitive buckets, while significantly increasing wear resistance and durability.

### DITCH CLEANING BUCKET (DCB) FOR EXCAVATOR WEIGHT 22-28 T



Model	Capacity SAE [l]	Cutting edge width [mm]	Weight [kg]*
DCB22-1800	800	1800	515
DCB24-2000	900	2000	560
DCB26-2200	1000	2200	615
DCB28-2200	1150	2200	690



\* Weight of the bucket excluding adapter



Tilting ditch cleaning buckets (TCB) are manufactured with direct assembly on the excavator arm pins or with an adapter for a quick coupler. The buckets are made entirely of HARDOX 500 TUF steel which makes them lighter than competitive buckets, while significantly increasing wear resistance and durability.

### TILT CLEANING BUCKET (TCB) FOR EXCAVATOR WEIGHT 22-28 T



Model	Capacity SAE [l]	Cutting edge width [mm]	Quantity of cylinders [Qty]	Weight [kg]*	Tilt [°]
TCB22-1800	800	1800	2	775	2x45°
TCB24-2000	900	2000	2	820	2x45°
TCB26-2200	1000	2200	2	875	2x45°
TCB28-2200	1150	2200	2	975	2x45°



\* Weight of the bucket excluding adapter

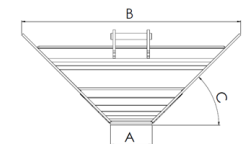
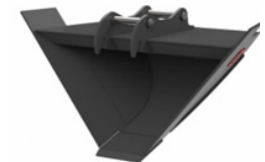


The trapezoidal bucket (VB) are manufactured with direct assembly on the excavator arm pins or with an adapter for a quick coupler. The buckets are made entirely of HARDOX 500 TUF steel which makes them lighter than competitive buckets, while significantly increasing wear resistance and durability.

### TRAPEZOIDAL BUCKET (VB) FOR EXCAVATOR WEIGHT 22-28 T



Model	Capacity SAE [l]	Cutting edge width A [mm]	Cutting edge width B [mm]	Bucket tilt angle C [°]	Weight [kg]
VB25-400/2600	1100	400	2600	45	780

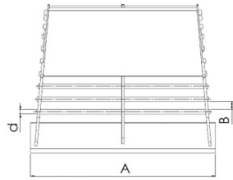


\* Weight of the bucket excluding adapter

## TOOLS FOR MACHINE WEIGHT 22-28 T

The sorting bucket (SB) are manufactured with direct assembly on the excavator arm pins or with an adapter for a quick coupler. The buckets are made entirely of HARDOX 500 TUF steel which makes them lighter than competitive buckets, while significantly increasing wear resistance and durability.

### SORTING BUCKET (SB) FOR EXCAVATOR WEIGHT 18-22 T



Model	Capacity SAE [l]	Cutting edge width A [mm]	Bar diameter [mm]	Bar spacing [mm]	Weight [kg]
SB24-1800	1200	1800	45	70	680
SB25-1900	1300	1900	45	70	750
SB28-2000	1400	2000	45	70	820



\* Weight of the bucket excluding adapter

The ripping teeth are manufactured with pins for direct mounting on the arm of excavator or with an adapter for a quick coupler. The ripping teeth are made of S355 steel and HARDOX 500 TUF, which significantly increases wear resistance and durability.

### RIPPER FOR EXCAVATOR WEIGHT 22-28 T



Model	Height H [mm]	Teeth system	Weight [kg]
R18-1200	1200	CATJ350	340
R26-1400	1400	CATJ450	475



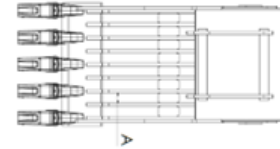
\* Weight of the ripper excluding attachment

Skeleton buckets (SKB) are manufactured with direct assembly on the excavator arm pins or with an adapter for a quick coupler. The buckets are made entirely of HARDOX 500 TUF steel which makes them lighter than competitive buckets, while significantly increasing wear resistance and durability.

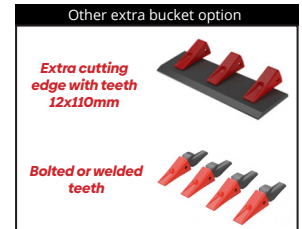
### SKELETON BUCKET (SKB) FOR EXCAVATOR WEIGHT 22-28 T



Model
QC-S50
QC-S60
QC-L-HS08
QC-L-HS10



Model	Capacity SAE [l]	Cutting edge width [mm]	Distance between ribs A [mm]	Weight [kg]	Teeth model	Quantity of teeth
SKB22-1200	1200	1200	80	680		
SKB22T-1200	1200	1200	80	750	CATJ350	4
SKB24-1300	1300	1300	80	720		
SKB24T-1300	1300	1300	80	805	CATJ350	5
SKB28-1400	1400	1400	80	800		
SKB28T-1400	1400	1400	80	885	CATJ350	5



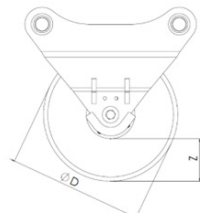
\* Weight of the bucket excluding adapter

The cutters are manufactured with pins for direct mounting on the arm of excavator or with an adapter for a quick connector. The cutters are made of S355 and HARDOX 500 TUF steel, which significantly increases wear resistance and durability.

### ASPHALT CUTTER FOR EXCAVATOR WEIGHT 22-28 T



Model	Depth of cut Z [mm]	Cutting disc diameter D [mm]	Weight [kg]
AC28-470	150	470	110



\* Weight of the asphalt cutter excluding adapter

**GRADING BEAM (GRB) FOR EXCAVATOR WEIGHT 22-28 T**

**ADAPTERS, TOP BRACKETS FOR EXCAVATOR WEIGHT 22-28 T**

The grading beam (GRB) are manufactured with pins for direct mounting on the arm of excavator or with an adapter for a quick connector. The grading beam are made of S355 and HARDOX 500 TUF steel, which significantly increases wear resistance and durability.



S60  
36kg

S65  
50kg

S70  
70kg

S70/55  
80kg

E-HS10  
85kg

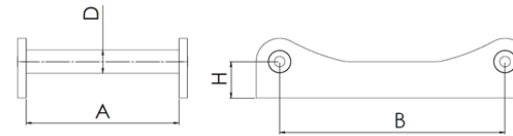
E-HS21  
140kg

CW-30  
90kg

CW-30S  
90kg

Model	Width W [mm]	Roller diameter D [mm]	Weight [kg]*
GRB08-1500	1500	245	318
GRB08-2000	2000	245	415
GRB12-2500	2500	245	450
GRB16-3000	3000	245	520

\* Weight of the grading beam excluding adapter

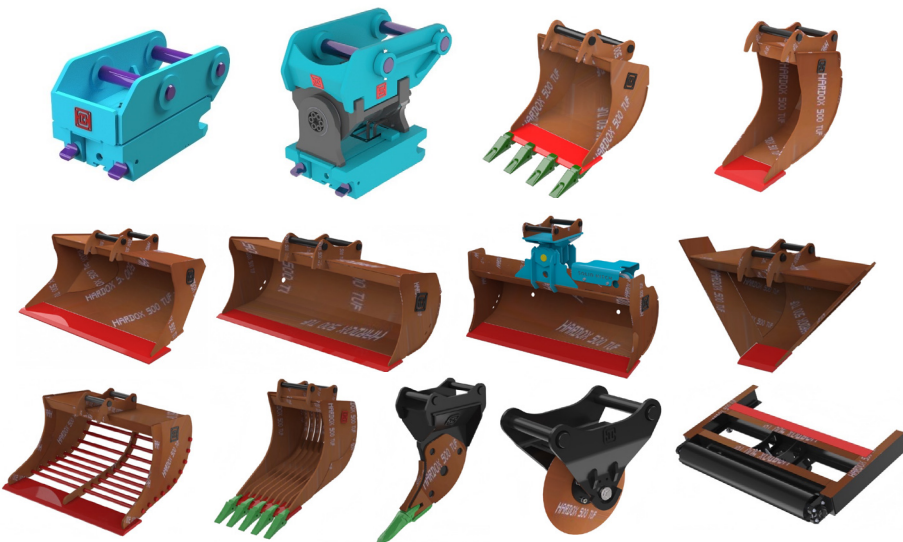


Model	A [mm]	B [mm]	D [mm]	H [mm]
AS70	452	600	70	120
AS70-HIGH	452	600	70	340
AS70H	452	600	70	120
AS70H-HIGH	452	600	70	340
AS70/55	552	600	70	140
AS70/55-HIGH	552	600	70	340
AS70/55H	552	600	70	140
AS70/55H-HIGH	552	600	70	340
AS80	592	670	80	150
AS80-HIGH	592	670	80	340
AS80H	592	670	80	150
AS80H-HIGH	592	670	80	340



\* Other adapters in option

**Material specification**



- STEEL HARDOX 500 TUF
- WEAR RESISTANT STEEL HB 500
- ROD CROMAX
- STEEL S690QL
- STEEL S355

Service Life



Grade	Increase in relative service life
Hardox 400 → 500 Tuf	60-70%
Hardox 450 → 500 Tuf	25-30%

Increasing bucket life using Hardox 500 TUF steel. SSAB company data